

ONLINE BLOOD BANK

*T. Sangeetha, **Ilham Abdullah, ***Farheen Jawed

*B.Tech (CSE) Lords Institute Of Engineering and Technology

**Ashlesha k. Asso Prof Lords Institute Of Engineering and Technology

Abstract - *In critical or emergency situations where accident occurs or during on-going treatments and surgeries etc there is urgent need for specific blood group. It requires lot of time to make the blood available and it is inconvenient during emergency situation, some rare blood groups are time consuming and difficult to arrange which are O- , AB- etc. In our country there is less awareness of blood donation, near about 20% of Indian population donates blood. In this project, we have proposed an efficient way to overcome problems in existing system. We are using Google API(application program interface). The APIs provide functionality like analytics, machine learning as a service (the Prediction API) or access to user data (when permission to read the data is given). Another important example is an embedded Google map on a website, which can be achieved using the Static maps API.*

Google map's API, takes users's address as one parameter and respective hospitals's address as another and give us distance between them.

1. INTRODUCTION

It is healthy donating blood. So, we have created an application to simplify the blood donation process. The donor can easily locate where his/her blood group is needed. Those locations can either be entities or individuals that urgently need the donor's blood group. When there is an urgent need for a particular blood group, you can use the application to message only the people having the required

blood group. This system contains different modules to maintain blood and blood donors. Emergency situations, where accidents occur, create an immediate, critical need for specific blood types. In addition to emergency need, advances in medicine have increased the need for blood in many on-going treatments and elective surgeries. Despite increasing necessity of blood, only about 5% of the Indian population donates blood. In our project we propose a new and efficient way to overcome such scenarios. A large number of blood donors are attracted using on the go web application. Since almost everyone carries a mobile phone with him, so it will be easy to search the nearest blood bank and it ensures instant location tracking and communication. Using GOOGLE API and we find donors and the blood bank nearer to the location from where the request is generated. Thus this would not be wrong to say that 'Mobile Blood Bank' can prove to be a boon for blood requesters.

2. LITERATURE REVIEW

In earlier days, there were no systems or application that locates places which are nearby the user. But now-a-days there are a few systems who can locate different places using GOOGLE API. location can be displayed on Google maps using free versions of Google Maps API (Application Platform Interface) .

For locating ATMs which are nearby are tracked and for that it is necessary to have an web application device which supports GOOGLE API. By making use of Dijkstra's algorithm to find possible shortest path between user and the



ATM booth and Haversine formula is also used to calculate the perpendicular distance. This makes use of Open Source Maps (OSM) [2]. Similarly, we can develop an application which can find blood banks and donors nearby. The use of free version of Google Maps API is used for location visualization. By this, we can help the users for better understanding the map and help them to locate the exact location of blood bank. This is going to be a standalone app, not depending on any 3rd party code (apart from some UI libraries like jQuery). It is based on PHP programming language. And to make it scalable and modular we would be making the app in 3-tier architecture pattern.

- UI Layer
- Business logics
- Database layer

We will be using bootstrap and jQuery for UI controls for homogeneity and responsiveness. And we will be using Restful API's wherever required.

- This application will be using PHP7 as its backbone. And will be based on MySQL database. Will be hosted on a XAMP (Windows, Apache, MySQL and PHP) environment.
- UI part would be based on HTML5, CSS3, JQuery, bootstrap. Each module and page will be completely responsive, so as to make it completely mobile friendly.
- And internally application will be communicating in JSON format, which is a standard general format to represent data, so that wherever

integration is required it can work seamlessly.

Database layer will be communicating with database via stored procedures, so that we minimize potential risks of SQL injection, and query execution is faster (As procedures are pre validated details

2.1 Gap analysis:

Previously we followed a system in which we could do all the things manually like find where the blood bank is and is the blood available by means of communication with other people. This was quite a time-consuming task. Therefore, today there is a need to overcome all the drawbacks of this traditional system and bring a system that performs this task quickly and with better functionality.

2.2 Objective of problem:

Main objectives of proposed system are as follows: -

Users can find blood banks and donors if they want blood. -

Users can locate blood banks easily if they are willing to donate blood. -

Notifies users to donate blood after completing 3 months of donation.

2.3 Major function:

Having everything maintained in a structured format always has an edge over others. We can pull out various reports and do various types of predictive and trend analysis based on past usage, so that banks can cater requests more efficiently.



Now many hospitals and multi speciality clinics are using EMR software to save patient history. Doctor has the ability to order a lab sample than and there itself, in such cases we can build RESTful API's which can be consumed by EMR system's, so that they know in real time whether blood bank A is having this type or not and doctor can then advice the patient accordingly.

Proposed system is divided into following functions:

1. Registration of users
2. Find for blood bank and donors near by
3. Donate blood.

3. PROPOSED SOLUTION

The main intension of this system is to find the place where there is necessity of blood and to provide it. In this system we are going to provide a facility to the blood banks so that they can update the stock details and also send notification to the donors that they require blood. Our proposed system is good for the blood banks and also to the users because it satisfies both of the needs.

For the blood bank we are going to provide a web application or so that they can update the stock details and request users to donate by sending a notification. This data is maintained in a database. The stock details are necessary to be updated and maintained so that when the user wants to track a blood bank then only the specific blood bank will be located when they provide the blood group while selecting the option need for blood or donate blood. At users end, we have a application which needs registration of users; this data is maintained in a database. At the time of user registration we

provide a facility for user to fill in their address. The Registration field consists of parameters like name, address, blood group, weight, etc.

At the time of searching a hospital for X reason, user can either :

- A) Use his default address, which was filled at registration
- B) He/she can add a new temporary address, if he is not at home or if in case he did'nt filled it at registration time.

After choosing current address via any of the above mentioned routes, App will compute distance from all the hospitals that matches the user's search criteria.

The user is provided with two main options: Find blood and Donate blood. When user selects need of blood option then the user's current location will be traced first using Google Location API and by using the current location, the blood bank and donor will be plotted on the map. And also the user has to provide which blood group he requires so that only those blood banks and donors are plotted on the map. The location of blood bank will be retrieved from Google API and the location of donor will be his current location and it will be retrieved using Google API. Now, we have also provided a facility for the users that they can select their location viz from registered location, current location and provided location. To select the provided location he has to plot this location on map with help of plotter instead of typing the entire address. The distance between the user and each blood bank or each donor will be calculated by Haversine.

The Haversine formula is as follows:

$$\Delta_{\text{lat}} = \text{lat2} - \text{lat1} \quad \dots (1)$$

$$\Delta_{\text{long}} = \text{long2} - \text{long1} \quad \dots(2)$$

$$a = \sin^2 (\Delta_{\text{lat}}/2) + \cos (\text{lat1}) \cdot \cos (\text{lat2}) \cdot \sin^2 (\Delta_{\text{long}}/2) \quad \dots\dots (3)$$

$$c = 2 \cdot y2 (\sqrt{a}, \sqrt{(1-a)}) \quad \dots\dots (4)$$

$$d = R \cdot c \quad \dots (5)$$

a = square of half of the straight line distance between two points.

c = great circle distance expressed in radians.

d = distance between the user and blood bank or donor

. R = radius of earth.

y = location of donor or the blood bank

The Dijkstra's shortest path algorithm is used to find out the shortest path from users to the blood banks or donors. Working of Dijkstra's algorithm is necessary because if the blood bank you are visiting is not able to provide your necessity then you should know which blood bank should be visited or to call that particular blood bank.

The blood bank would be showing the availability of that particular blood and the quantity of blood.

The working of Dijkstra's algorithms is given below.

Dijkstra's shortest path Algorithm :

It maintains a list of unvisited vertices.

1. Assign to every blood bank a tentative distance value: set it to zero for our initial node (current location of the user where he started to search for blood banks) and to infinity for all blood banks.

2. Set the initial node as current. Mark all blood banks unvisited. Create a set of all the unvisited blood banks called the unvisited set.

3. For the current blood bank, consider all of its unvisited neighbours (neighbouring blood banks) and calculate their tentative distances. Compare the newly calculated tentative distance to the current assigned value and assign the smaller one.

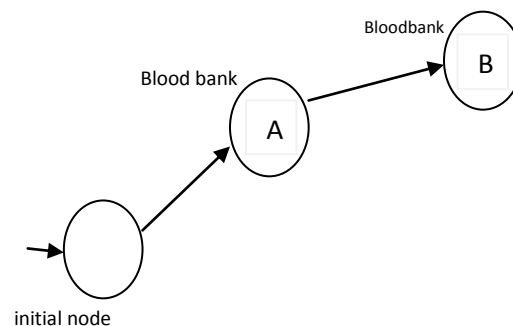


figure no. 1. Working of Algorithm

For example as shown in figure no. 1,

if the current blood bank A is marked with a distance of 7, and the edge connecting it with a neighbour B has length 2, then the distance to B (through A) will be 7 + 2 = 9. If B was previously

marked with a distance greater than 9 then change it to 9. Otherwise, keep the current value

4. When we are done considering all of the neighbours of the current blood bank, mark the current blood bank as visited and remove it from the unvisited set. A visited blood bank will never be checked again.

5. If the destination blood bank has been marked visited (when planning a route between two specific blood bank) or if the smallest tentative distance among the blood bank in the unvisited set is infinity (when planning a complete traversal; occurs when there is no connection between the initial node(user's location) and remaining unvisited blood banks), then stop. The algorithm has finished.

6. Otherwise, select the unvisited blood bank that is marked with the smallest tentative distance, set it as the new "current blood bank", and go back to step 3.

When the blood bank and donor are plotted on the map after clicking on that particular bank or donor, information regarding them like contact details will be provided and also the urgency of requirement can be given. Now, when the user wants to donate blood, then he will be selecting the option donate blood. After selecting that option, according to your current location or registered location or provided location, blood banks will be plotted.

This will work same as the need for blood module. Also one of the important functionality is to Post Requests to all users. This functionality allows user to request other users which are using the web application by providing them your blood group and all users can view this posted request . As well as some

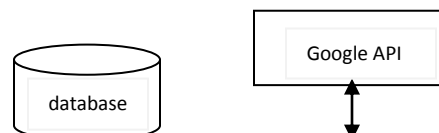
additional functionality like reminder so that the reminder will be sent after completion of his three months of donating blood.

When the user donates a blood this information is saved in the database, so that after three months he can give a notification to the user that now you can donate. Database will store information like location of blood bank, donors and stock of blood banks

3.1 Architecture:

Architecture diagram explains the system overview, as to how system works in real. There are four main components which are central database, users(Web application phone & desktop applications for blood bank), server, Google Map Services. In figure no.2, the server will consist of database where data such as stock of blood bank, donar's details, locations are stored at this central database. Web application will be for the users like us who can register themselves and once registered, they become the donor for our application. The Desktop application will be for the blood banks where blood banks will be added by admin and the user_id and password will be given to the blood bank by the admin. Then the blood bank can add or update stock and also respond to users request. Users are able to find location of blood bank and donars when they require blood or if they want to donate blood using internet through Google Map API.

Users having phone should have internet and through which tracking is done using Google Map API. Server stores this information and which is given to central database.



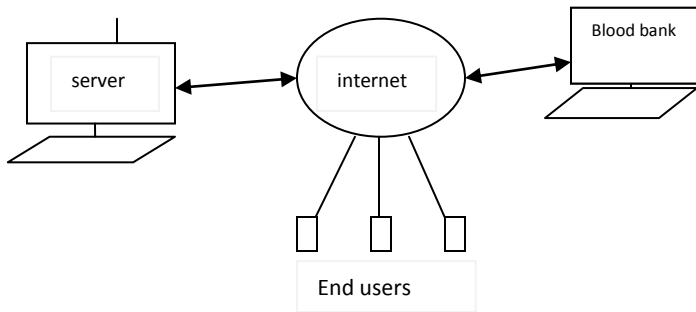


Figure no.2 Architecture diagram

3.2 Sequence Diagram:

In figure no.3 sequence diagram of our system is shown, it represents objects like Admin, Hospital, User, Location API, Map plotter, Algo Util, DB Util, Web application which shows sequences of activities in our system. User will register himself and the record will be saved in database, this record will be retrieved from database when user logs himself and checks if the login details are matched from the database.

When user is valid, he can perform functions like search for blood bank and donors. For searching the blood banks and donors near by the user, location API will be used to get the user's current location. According to the location, database will provide all the blood bank in that location.

Now the haversine formula is used to calculate the distance between any two blood banks or blood bank and user.

After a user is authenticated and authorized as 'Hospital', he will be land on hospital administration page for that respective facility. That page will provide statistics for that facility, like how many users visited their page, how many users rated them and their ratings, and

also this page will help hospital admin's to feed in data to database for their facility.

In this context data comprises of following data items :

- 1) Services offered by hospital
- 2) Types of blood group available.
- 3) Unity of blood group available
- 4) Phone number of hospital.
- 5) Slider(banner) images of hospital

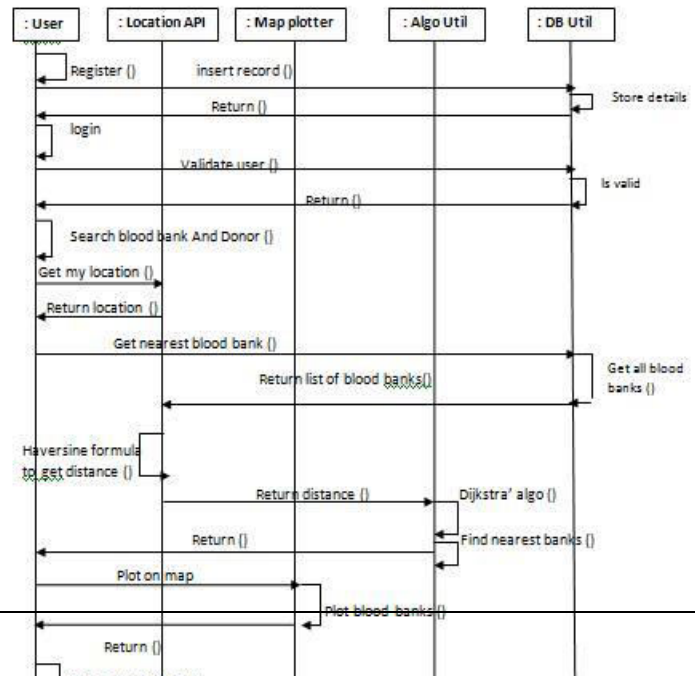




Figure no.3 sequence diagram

This distance is given to the object Algo Util, where the dijkstra's algorithm works to find out the minimum path from starting point to all the blood banks. It tells us that which blood bank to visit first and from that blood bank which blood bank to visit next, in case if the blood bank you visited doesn't provide your requirement. This will be displayed to the user by map Plotter. Post request is another functionality in which the users can post request to all other user, requesting for the particular blood group. This can be viewed

in view request and notification will be sent to other users.

4. CONCLUSIONS

The proposed system evaluates the possibility to combine the facility of donating as well as requesting blood to the blood bank in just few tap. The user and the blood bank both can satisfy their needs whenever they require blood or if the user wants to donate blood. As most of the people carry mobile phone with them, it ensures instant location tracking and communication and thus it is an advantage to propose a system on Web application plat. Thus the proposed system provides appropriate information in less time as compared to

traditional method of searching blood banks and donors which included practices like man to man communication, hoardings, paper pamphlets and hence, clubs with today's high demanding blood requirement.

We will try to make a suite of applications based on one database. Our main intention is to build a stand alone cross browser web app which can be used on any hand held device and(or) on any other platform seamlessly.

We can also build an online community based on the same data source, where in community member can help each others, and maybe some doctors can be there on board as well, on something which they have faced earlier or any advice which have helped them before for some medical condition, such type of forum interactions will save doctor consultation fees for many and will help in providing quick turnarounds for emergency cases

REFERENCES

[1] Hind Abdalsalam, Abdallah Dafallah ;"Design and implementation of an accurate real time GOOGLE API tracking system";IEEE-ISBN:978-1-4799- 3166-8, 2014.

[2] Rajib Chandra Das, Parijat Prashun Purohit,Tauhidul Alam, Mahfuzulhoq Chowdhury "Location Based ATM Locator System Using OpenStreetMap"; IEEE-978-1-4799=6399-7/14;2014. International Research Journal of Engineering and Technology (IRJET) e-ISSN: 2395 -0056 Volume: 03 Issue: 02 | Feb-2016 www.irjet.net p-ISSN: 2395-0072 © 2016,



International Journal for Innovative Engineering and Management Research

A Peer Reviewed Open Access International Journal

www.ijemr.org

IRJET | Impact Factor value: 4.45 | ISO 9001:2008 Certified Journal | Page 1330

[3] Raj Kishen Moloo, Varun Kumar Digumber "Low-Cost Mobile GOOGLE API Tracking Solution";IEEE- 978-0-7695-4464-9/11;2011.

[4] Rasool R., Suresh M. "24 hours GOOGLE API tracking in web applicationoperating system"; International Journal of Scientific and Research Publications, Volume 4, Issue 3, March 2014.

[5] P. Priya, V. Saranya, S. Shabana, Kavitha Subramani "The Optimization of Blood Donor Information and Management System by Technopedia"; International Journal of Innovative Research in Science, Engineering and Technology, Feb 2014.

[6] T.Hilda Jenipha, R.Backiyalakshmi, "Web applicationBlood Donor Life Saving Application in Cloud Computing"; American Journal of Engineering Research (AJER), 2014.

[7] Saurin Parikh, Preeti Kathiria, Yashesh Vaghela, Harit Shah, Darshan Dholakiya "A Geo-Location based Mobile Service that Dynamically Locates and Notifies the nearest Blood Donors for Blood Donation during Medical Emergencies" ; International Journal of Computer Applications (0975- 8887)Volume 88 ; No.3, February 2014.

[8] Dijkstrasalgorithm[Online]
[http://en.wikipedia.org/wiki/Dijkstra's algorithm](http://en.wikipedia.org/wiki/Dijkstra's_algorithm)

[9] HaversineFormula
[Online].<http://andrew.hedges.name/experiments/haversine>