



# International Journal for Innovative Engineering and Management Research

A Peer Reviewed Open Access International Journal

www.ijiemr.org

## COPY RIGHT

**2017 IJIEMR.** Personal use of this material is permitted. Permission from IJIEMR must be obtained for all other uses, in any current or future media, including reprinting/republishing this material for advertising or promotional purposes, creating new collective works, for resale or redistribution to servers or lists, or reuse of any copyrighted component of this work in other works. No Reprint should be done to this paper, all copy right is authenticated to Paper Authors

IJIEMR Transactions, online available on 18<sup>th</sup> Nov 2017. Link

[:http://www.ijiemr.org/downloads.php?vol=Volume-6&issue=ISSUE-11](http://www.ijiemr.org/downloads.php?vol=Volume-6&issue=ISSUE-11)

Title: **Wi-Fi BASED WIRELESS DEVICE CONTROL FOR INDUSTRIAL ATOMIZATION**

Volume 06, Issue 11, Pages: 152 – 160.

Paper Authors

**D.RAVINDAR, MR.N.BHOJANNA**

Jagruti Institute of Engineering and Technology



USE THIS BARCODE TO ACCESS YOUR ONLINE PAPER

To Secure Your Paper As Per **UGC Guidelines** We Are Providing A Electronic Bar Code

## Wi-Fi BASED WIRELESS DEVICE CONTROL FOR INDUSTRIAL ATOMIZATION

<sup>1</sup>D.RAVINDAR, <sup>2</sup>MR.N.BHOJANNA

<sup>1</sup>M.Tech Scholar, Embedded Systems, Jagruti Institute of Engineering and Technology

<sup>2</sup>Asst.Professor, Dept of ECE, Jagruti Institute of Engineering and Technology

**ABSTRACT-** with advancement of Automation technology, life is getting simpler and easier in all aspects. In today's world Automatic systems are being preferred over manual system. With the rapid increase in the number of users of internet over the past decade has made Internet a part and parcel of life, and IoT is the latest and emerging internet technology. Internet of things is a growing network of everyday object-from industrial machine to consumer goods that can share information and complete tasks while you are busy with other activities. Wireless Home Automation system(WHAS) using IoT is a system that uses computers or mobile devices to control basic home functions and features automatically through internet from anywhere around the world, an automated home is sometimes called a smart home. It is meant to save the electric power and human energy. The home automation system differs from other system by allowing the user to operate the system from anywhere around the world through internet connection. In this paper we present a Home Automation system(HAS) using Intel Galileo that employs the integration of cloud networking, wireless communication, to provide the user with remote control of various lights, fans, and appliances within their home and storing the data in the cloud. The system will automatically change on the basis of sensors' data. This system is designed to be low cost and expandable allowing a variety of devices to be controlled.

**Key Words:** Home automation System (HAS), Internet of Things (IoT), Cloud networking, Wi-Fi network, Intel Galileo Microcontroller

### I. INTRODUCTION

#### A. Overview

Homes of the 21st century will become more and more self-controlled and automated due to the comfort it provides, especially when employed in a private home. A home automation system is a means that allow users to control electric appliances of varying kind.Many existing, well-established home automation systems are based on wired communication. This does not pose a problem until the system is planned well in advance and installed during the physical construction of the building.

But for already existing buildings the implementation cost goes very high. In contrast, Wireless systems can be of great help for automation systems. With the advancement of wireless technologies such as Wi-Fi, cloud networks in the recent past, wireless systems are used every day and everywhere.

#### B. Advantages of Home automation systems

In recent years, wireless systems like Wi-Fi have become more and more common in home networking. Also in home and building automation systems, the use of

wireless technologies gives several advantages that could not be achieved using a wired network only. 1) Reduced installation costs: First and foremost, installation costs are significantly reduced since no cabling is necessary. Wired solutions require cabling, where material as well as the professional laying of cables (e.g. into walls) is expensive. 2) System scalability and easy extension: Deploying a wireless network is especially advantageous when, due to new or changed requirements, extension of the network is necessary. In contrast to wired installations, in which cabling extension is tedious. This makes wireless installations a seminal investment. 3) Aesthetical benefits: Apart from covering a larger area, this attribute helps to full aesthetical requirements as well. Examples include representative buildings with all-glass architecture and historical buildings where design or conservatory reasons do not allow laying of cables. 4) Integration of mobile devices: With wireless networks, associating mobile devices such as PDAs and Smartphones with the automation system becomes possible everywhere and at any time, as a device's exact physical location is no longer crucial for a connection (as long as the device is in reach of the network). For all these reasons, wireless technology is not only an attractive choice in renovation and refurbishment, but also for new installations.

## **II. RELATED WORK**

[1] Sirsath N. S, Dhole P. S, Mohire N. P, Naik S. C & Ratnaparkhi N.S This paper proposes a Home Automation system that employs the integration of multi-touch

mobile devices, cloud networking, wireless communication, and power-line communication to provide the user with remote control of various lights and appliances within their home. This system uses a consolidation of a mobile phone application, handheld wireless remote, and PC based program to provide a means of user interface to the consumer.[2] Basil Hamed The main objective of this Paper is to design and implement a control and monitor system for smart house. Smart house system consists of many systems that controlled by LabVIEW software as the main controlling system in this paper. Also, the smart house system was supported by remote control system as a sub controlling system. The system also is connected to the internet to monitor and control the house equipment's from anywhere in the world using LabVIEW. [3] Deepali Javale, Mohd. Mohsin, Shreerang Nandanwar The prime objective of this paper is to assist handicapped/old aged people. It gives basic idea of how to control various home appliances and provide a security using Android phone/tab. The design consists of Android phone with home automation application, Arduino Mega ADK. User can interact with the android phone and send control signal to the Arduino ADK which in turn will control other embedded devices/sensors. [4] Basma M. Mohammad El-Basioni, Sherine M. Abd El-kader and Mahmoud Abdelmonim Fakhreldin This paper proposes a new design for the smart home using the wireless sensor network and the biometric technologies. The proposed system employs the biometric in the

authentication for home entrance which enhances home security as well as easiness of home entering process. The structure of the system is described and the incorporated communications are analyzed, also an estimation for the whole system cost is given which is something lacking in a lot of other smart home designs offers. WB-SH is designed to be capable of incorporating in a building automation system and it can be applied to offices, clinics, and other places. The paper ends with an imagination for the future of the smart home when employs the biometric technology in a larger and more comprehensive form. The paper ends with an imagination for the future of the smart home when employs the biometric technology in a larger and more comprehensive form.

### III. SYSTEM ANALYSIS

#### A. Problem Definition

Home automation systems face four main challenges, these are high cost of ownership, inflexibility, poor manageability, and difficulty in achieving security. The main objectives of this research is to design and implement a home automation system using IoT that is capable of controlling and automating most of the house appliances through an easy manageable web interface. The proposed system has a great flexibility by using Wi-Fi technology to interconnect its distributed sensors to home automation server. This will decrease the deployment cost and will increase the ability of upgrading, and system reconfiguration.

#### B. Proposed System Feature

The proposed system is a distributed home automation system, consists of server,

sensors. Server controls and monitors the various sensors, and can be easily configured to handle more hardware interface module (sensors). The Intel Galileo development board, with built in WiFi card port to which the card is inserted, acts as web server. Automation System can be accessed from the web browser of any local PC in the same LAN using server IP, or remotely from any PC or mobile handheld device connected to the internet with appropriate web browser through server real IP (internet IP). WiFi technology is selected to be the network infrastructure that connects server and the sensors. WiFi is chosen to improve system security (by using secure WiFi connection), and to increase system mobility and scalability.

### IV. SYSTEM DESIGN AND IMPLEMENTATION

#### A. Proposed Home Automation System

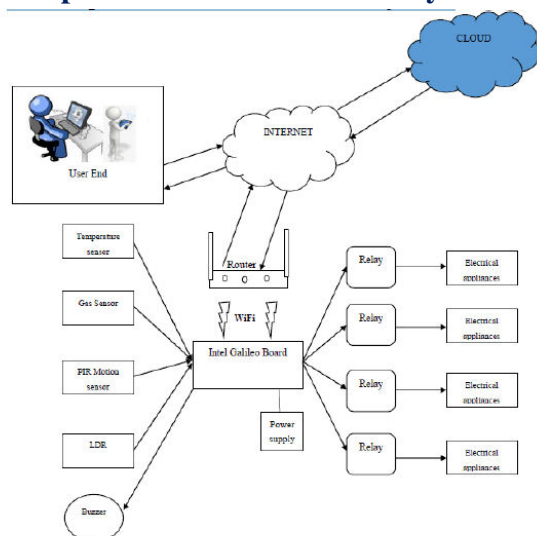


Figure 1: Proposed model of Home automation system

The proposed model of the home automation system is as shown in the figure1. The model consist of different sensors like temperature, gas, motion and LDR. Initially



the Intel Galileo connects to the internet through WiFi. When the connection is established it will start reading the parameters of sensors like p1, p2, p3 etc. The threshold levels for the required sensors are set as t1, t2, t3 etc. The sensor data are sent to the web server and stored in the cloud. The data can be analyzed anywhere any time. If the sensor parameters are greater than the threshold level then the respective alarm a1, a2, a3 etc. will be raised and the required actuation is done for the controlling of the parameters. In the proposed model the temperature, gas leakage, motion in the house is monitored. The temperature and the motion detection is stored in cloud for analysis. If the temperature exceeds the threshold level then the cooler will turn on automatically and it will off when the temperature comes to control. Similarly when there is a leakage of gas in the house alarm is raised giving the alert sound. The required lights are turned on/off automatically by detecting the light outside the house. The user can also monitor the electric appliances through the internet via web server. If the lights or any electrical appliances are left on in hurry can be seen and turned off remotely through simply typing the IP address of the web server.

## **B. Proposed Home Automation System Functions**

The proposed home automation system has the capabilities to control the following components in users home and monitor the following alarms:

- Temperature and humidity
- Motion detection
- Fire and smoke detection

- Light level
- The proposed home automation system can control the following appliance:
  - Lights on/off/dim
  - Fan on/off
  - On/off different appliance

## **C. Software design**

Front End Design: HTML is a format that tells a computer how to display a web page. The documents themselves are plain text files with special "tags" or codes that a web browser uses to interpret and display information on your computer screen. HTML stands for Hyper Text Markup Language; an HTML file is a text file containing small markup tags. The markup tags tell the Web browser how to display the page. An HTML files must have an htm or html file extension. Cloud Storage: Cloud computing is the practice of using remote servers on the internet to manage, store and process data instead of using a personal computer. Cloud computing is a general term that is better divided into three categories: Infrastructure-as-a-Service, Platform-as-a-Service, and Software-as-a-Service. IaaS (or utility computing) follows a traditional utilities model, providing servers and storage on demand with the consumer paying accordingly. PaaS allows for the construction of applications within a provider's framework, like Google's App Engine. SaaS enables customers to use an application on demand via a browser. A common example of cloud computing is Gmail, where you can access your stored data from any computer with internet access.

Here we are using Gmail for the storage of the data.

## D. Implementation Setup

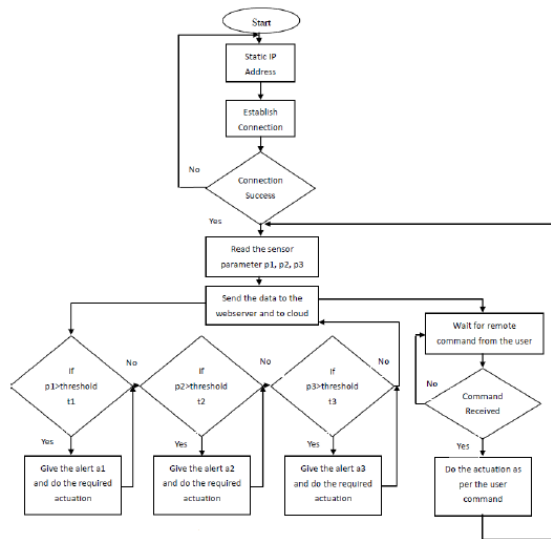


Figure. 2 sequence of activities in WHAS

Figure 2 illustrates the sequence of activities in the WHAS. When the connection is established it will start reading the parameters of sensors like p1, p2, p3 etc. The threshold levels for the required sensors are set as t1, t2, t3 etc. The sensor data are sent to the web server and stored in the cloud. The data can be analyzed anywhere any time. If the sensor parameters are greater than the threshold level then the respective alarm a1, a2, a3 etc. will be raised and the required actuation is done for the controlling of the parameters.

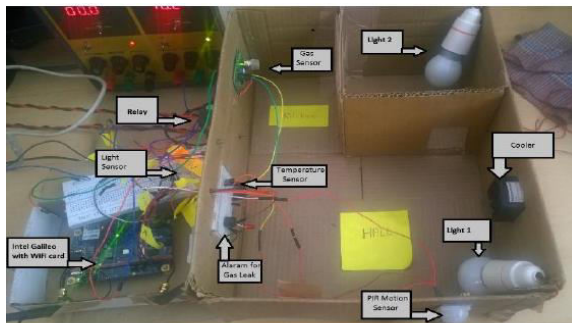


Figure 3: Experimental setup of HAS

A model house is built for the home automation system and is as shown in the figure 3. At the door of the house a motion sensor is fixed to detect any movement near the door. Light 1 will turn on automatically when light sensor detects the darkness. A cooler/Fan will turn on when the room temperature exceeds the set threshold and in turn reduces the room temperature. The gas sensor MQ-6 is placed in the kitchen to detect any gas leakage, if any leakage is detected the alarm in the hall is raised. Relay is used to switch the electrical appliances like light, fan etc. The IntelGalileo is placed in store room or garage. The Intel Galileo is connected with WiFi card with the antennas for the connectivity with internet.

## V. RESULTS

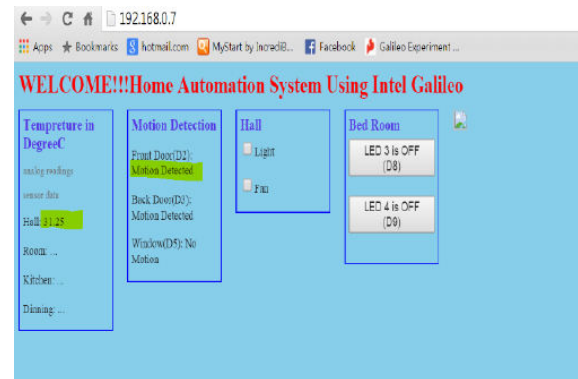
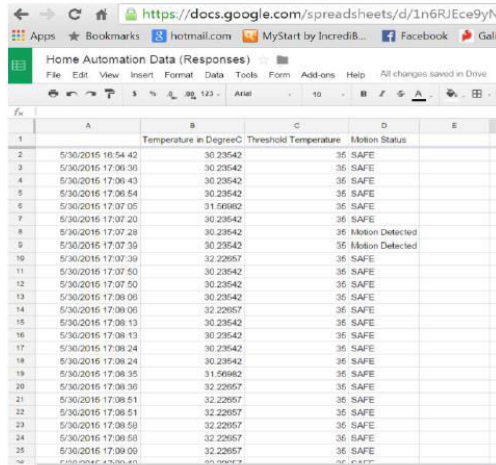


Figure 4: Web server page

After the successful connection to the server, the data of sensor are sent to the web server for monitoring of the system. The figure 4 shows the web server page which will allow us to monitor and control the system. By entering the assigned IP address in the web browser this web server page will appear. The web server gives the information about the temperature in different places of the house and motion state in the house. It also gives the status of the various electrical

appliances like light, fan etc which we can control remotely.



Time	Temperature in DegreeC	Threshold Temperature	Motion Status
5/30/2015 16:54:42	30.23642	35	SAFE
5/30/2015 17:06:30	30.23642	35	SAFE
5/30/2015 17:06:43	30.23642	35	SAFE
5/30/2015 17:06:54	30.23642	35	SAFE
5/30/2015 17:07:05	31.56682	35	SAFE
5/30/2015 17:07:20	30.23642	35	SAFE
5/30/2015 17:07:28	30.23642	35	Motion Detected
5/30/2015 17:07:39	30.23642	35	Motion Detected
5/30/2015 17:07:39	32.22657	35	SAFE
5/30/2015 17:07:50	30.23642	35	SAFE
5/30/2015 17:07:50	30.23642	35	SAFE
5/30/2015 17:08:01	30.23642	35	SAFE
5/30/2015 17:08:01	32.22657	35	SAFE
5/30/2015 17:08:13	30.23642	35	SAFE
5/30/2015 17:08:13	30.23642	35	SAFE
5/30/2015 17:08:24	30.23642	35	SAFE
5/30/2015 17:08:35	31.56682	35	SAFE
5/30/2015 17:08:36	32.22657	35	SAFE
5/30/2015 17:08:51	32.22657	35	SAFE
5/30/2015 17:08:51	32.22657	35	SAFE
5/30/2015 17:08:58	32.22657	35	SAFE
5/30/2015 17:09:08	32.22657	35	SAFE
5/30/2015 17:09:09	32.22657	35	SAFE
5/30/2015 17:09:40	30.23642	35	SAFE

Figure 5: Data base of the sensors data stored in the cloud. All the required data is stored in the cloud (Gmail). The stored data can be analyzed at anytime and anywhere. The figure 5 shows the temperature in degree Celsius stored at different time intervals. And also it shows the state of the motion detector along with the time. It also provides information about time of motion detected and how many times as well. All this information is stored in the cloud which can be checked by the user any time when away from home.

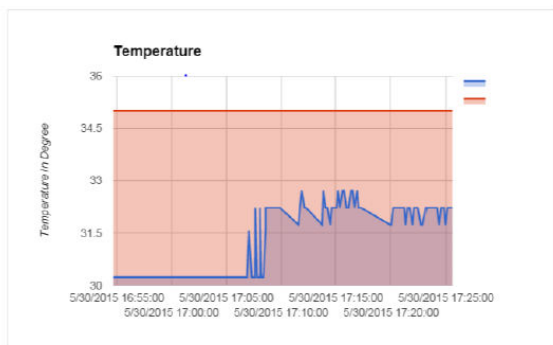


Figure 6: Graph showing the different temperature value along with the threshold

The graph shown in the figure 6 gives the analysis of the temperature at different time and threshold level of the temperature. By seeing the graph we can come to know the

change in the temperature. And at what time the temperature was low/ high. We can also know that was temperature was above the threshold level or not, if was above then at what time.

## VI. CONCLUSION AND FUTURE WORK

### A. Conclusion

The home automation using Internet of Things has been experimentally proven to work satisfactorily by connecting simple appliances to it and the appliances were successfully controlled remotely through internet. The designed system not only monitors the sensor data, like temperature, gas, light, motion sensors, but also actuates a process according to the requirement, for example switching on the light when it gets dark. It also stores the sensor parameters in the cloud (Gmail) in a timely manner. This will help the user to analyze the condition of various parameters in the home anytime anywhere.

### B. Future work

Using this system as framework, the system can be expanded to include various other options which could include home security feature like capturing the photo of a person moving around the house and storing it onto the cloud. This will reduce the data storage than using the CCTV camera which will record all the time and stores it. The system can be expanded for energy monitoring, or weather stations. This kind of a system with respective changes can be implemented in the hospitals for disable people or in industries where human invasion is impossible or dangerous, and it can also be implemented for environmental monitoring.



## **ACKNOWLEDGEMENT**

We acknowledge the efforts and hard work by the experts who have contributed towards development of the different home automation systems. We also acknowledge the efforts of Dr. K Natarajan, HoD, TCE, MSRIT and Dr. B P Vijay Kumar, HoD, ISE for their constant support, suggestions and modifications to improve the quality of the paper and to help prepare the camera-ready copy of our paper.

## **REFERENCES**

- [1] Sirsath N. S, Dhole P. S, Mohire N. P, Naik S. C & Ratnaparkhi N.S Department of Computer Engineering, 44, Vidyanagari, Parvati, Pune-411009, India University of Pune, "Home Automation using Cloud Network and Mobile Devices"
- [2] Deepali Javale, Mohd. Mohsin, Shreerang Nandanwar "Home Automation and Security System Using Android ADK" in International Journal of Electronics Communication and Computer Technology (IJECCCT) Volume 3 Issue 2 (March 2013)
- [3] Charith Perera, Student Member, IEEE, Arkady Zaslavsky, Member, IEEE, Peter Christen, and Dimitrios Georgakopoulos, Member, IEEE "Context Aware Computing for The Internet of Things: A Survey". IEEE COMMUNICATIONS SURVEYS & TUTORIAL
- [4] Charith Perera\_y, Arkady Zaslavskyy, Peter Christen\_ and Dimitrios Georgakopoulo Research School of Computer Science, The Australian National University, Canberra, ACT 0200, Australia yCSIRO ICT Center, Canberra, ACT 2601, Australia " CA4IOT: Context Awareness for Internet of Things"
- [5] Bill N. Schilit, Norman Adams, and Roy Want, "Context-Aware Computing Applications"
- [6] Jayavardhana Gubbi, Rajkumar Buyya, Slaven Marusic, a Marimuthu Palaniswamia, "Internet of Things (IoT): A Vision, Architectural Elements, and Future Directions"
- [7] S.P.Pande, Prof.Pravin Sen, "Review On: Home Automation System For Disabled People Using BCI" in IOSR Journal of Computer Science (IOSR-JCE) e-ISSN: 2278-0661, p-ISSN: 2278-8727 PP 76-80
- [8] Basil Hamed, "Design & Implementation of Smart House Control Using LabVIEW" at International Journal of Soft Computing and Engineering (IJSCE) ISSN: 2231-2307, Volume-1, Issue-6, January 2012
- [9] Basma M. Mohammad El-Basioni1, Sherine M. Abd El-kader2 and Mahmoud Abdelmonim Fakhreldin3, "Smart Home Design using Wireless Sensor Network and Biometric Technologies" at Volume 2, Issue 3, March 2013
- [10] Inderpreet Kaur, "Microcontroller Based Home Automation System With Security" at IJACSA) International Journal of Advanced Computer Science and Applications, Vol. 1, No. 6, December 2010
- [11] Rosslin John Robles and Tai-hoon Kim, "Review: Context Aware Tools for Smart Home Development", International Journal of Smart Home, Vol.4, No.1, January, 2010
- [12] Hitendra Rawat, Ashish Kushwah, Khyati Asthana, Akanksha Shivhare, "LPG Gas Leakage Detection & Control System", National Conference on Synergetic Trends in engineering and Technology (STET-2014) International Journal of Engineering



and Technical Research ISSN: 2321-0869, Special Issue

[13] Nicholas D., Darrell B., Somsak S., "Home Automation using Cloud Network and Mobile Devices", IEEE Southeastcon 2012, Proceedings of IEEE.

[14] Chan, M., Campo, E., Esteve, D., Fourniols, J.Y., "Smart homes-current features and future perspectives," *Maturitas*, vol. 64, issue 2, pp. 90-97, 2009

[15] Das, S.R., Chita, S., Peterson, N., Shirazi, B.A., Bhadkamkar, M., "Home automation and security for mobile devices," IEEE PERCOM Workshops, pp. 141-146, 2011

[16] S.D.T. Kelly, N.K. Suryadevara, S.C. Mukhopadhyay, "Towards the Implementation of IoT for Environmental Condition Monitoring in Homes", IEEE, Vol. 13, pp. 3846-3853, 2013

[17] Rajeev Piyare "Internet of Things: Ubiquitous Home Control and Monitoring System using Android based Smart Phone" *International Journal of Internet of Things* 2013, 2(1): 5-11 DOI: 10.5923/j.ijit.20130201.02

[18] G. Kortuem, F. Kawsar, D. Fitton, and V.Sundramoorthy, "Smart objects as building blocks for the internet of things," *Internet Computing*, IEEE, vol. 14, pp. 44-51, 2010.

[19] S. Hilton. (2012, 14 January). Progression from M2M to the Internet of Things: an introductory blog. Available: <http://blog.bosch-si.com/progression-from-m2m-to-internet-of-things-an-introductory-blog/>

[20] C.-H. Chen, C.-C. Gao, and J.-J. Chen, "Intelligent Home Energy Conservation

System Based On WSN," presented at the International Conference on Electrical, Electronics and Civil Engineering, Pattaya, 2011.

[21] R. Piyare and M. Tazil, "Bluetooth based home automation system using cell phone," in *Consumer Electronics (ISCE)*, 2011 IEEE 15th International Symposium on, 2011, pp. 192-195.

[22] Wikipedia. (2012, 12th December). Home automation. Available: [http://en.wikipedia.org/wiki/Home\\_automation](http://en.wikipedia.org/wiki/Home_automation)

[23]<http://www.smartcomputing.com/editorial/article.asp?article=articles%2F1995%2Fmar95%2Fpcn0323%2Fpcn0323.asp> retrieved 2010 09 02

[24] "U.S. Patent 613809: Method of and apparatus for controlling mechanism of moving vessels and vehicles". United States Patent and Trademark Office. 1898-11-08. Retrieved 2010-06-16.

[25] William C. Mann (ed.) *Smart technology for aging, disability and independence : the state of the science*, John Wiley and Sons, 2005 0- 471-69694-3, pp. 34-66

[26] N. Sriskanthan and Tan Karand. "Bluetooth Based Home Automation System". *Journal of Microprocessors and Microsystems*, Vol. 26, pp.281-289, 2002.

[27] Muhammad Izhar Ramli, Mohd Helmy Abd Wahab, Nabihah, "TOWARDS SMART HOME: CONTROL ELECTRICAL DEVICES ONLINE", Nornabihah Ahmad *International Conference on Science and Technology: Application in Industry and Education* (2006)

[28] Al-Ali, Member, IEEE & M. AL-Rousan, "Java-Based Home Automation System R." IEEE Transactions on Consumer Electronics, Vol. 50, No. 2, MAY 2004

[29] BCC Research, "Sensors: Technologies and global markets,"

[30] BCC Research, Market Forecasting, March 2011, <http://www.bccresearch.com/report/sensors-technologies-markets-ias006d.html>

[Accessed on: 2012-01-05].

[31] European Commission, "Internet of things in 2020 road map for the future," Working Group RFID of the ETP EPOSS, Tech. Rep., May 2008, <http://ec.europa.eu/information society/policy/rfid/documents/iotprague2009.pdf>

[Accessed on: 2011-06-12].

[32] T. Lu and W. Neng, "Future internet: The internet of things," in 3rd International Conference on Advanced Computer Theory and Engineering (ICACTE), vol. 5, August 2010, pp. V5-376-V5-380. Available: <http://dx.doi.org/10.1109/ICACTE.2010.5579543>.

[33] P. Guillemin and P. Friess, "Internet of things strategic research roadmap," The Cluster of European Research Projects, Tech. Rep., September 2009, [http://www.internet-of-things-research.eu/pdf/IoT\\_Cluster\\_Strategic\\_Research\\_Agenda\\_2009.pdf](http://www.internet-of-things-research.eu/pdf/IoT_Cluster_Strategic_Research_Agenda_2009.pdf) [Accessed on: 2011-08-15].

[34] J. Vishwajeet H. Bhide "A Survey on the Smart Homes using Internet of Things (IoT)"

[35] Volume 2, Issue 12, December 2014 International Journal of Advance Research in Computer Science and Management

Studies Research Article / Survey Paper / Case Study

[36] Rahul Godha, Sneha Prateek, Nikhita Kataria "Home Automation: Access Control for IoT Devices" International Journal of Scientific and Research Publications, Volume 4, Issue 10, October 2014 1 ISSN 2250-3153

### Guide Details



**Mr. N. Bhojanna**

Asst. Professor ECE Department, Jagruti Institute of Engineering and Technology.

### Student Details



**D. Ravindar**

M.Tech Scholar, Embedded Systems, Jagruti Institute of Engineering and Technology