

COPY RIGHT



ELSEVIER
SSRN

2021IJIEMR. Personal use of this material is permitted. Permission from IJIEMR must be obtained for all other uses, in any current or future media, including reprinting/republishing this material for advertising or promotional purposes, creating new collective works, for resale or redistribution to servers or lists, or reuse of any copyrighted component of this work in other works. No Reprint should be done to this paper, all copy right is authenticated to Paper Authors

IJIEMR Transactions, online available on 20th Mar 2019.

Link : <https://ijiemr.org/downloads/Volume-08/Issue-03>

Title: IT PROJECT MANAGEMENT

volume 08, Issue 02, Pages: 241-244

Paper Authors: Gouri Shankar Sharma¹, B.Sai Prasanna²



USE THIS BARCODE TO ACCESS YOUR ONLINE PAPER

IT PROJECT MANAGEMENT

Gouri Shankar Sharma¹, B.Sai Prasanna²

Assistant Professor^{1,2}

DEPARTMENT OF ECE

MALLA REDDY ENGINEERING COLLEGE(MREC)

Abstract- IT Project Management is a cutting-edge web-based tool for managing and tracking software development, IT, manufacturing, financial, and a variety of other projects. It's called "Easy Projects" for a reason: it was created with the goal of making project management simple and painless. Timesheets for employees and contractors, as well as other useful information You can see certain chores at a glance thanks to a range of filters and sorting options. It only takes 30 seconds to create a task and assign it to a team member! This framework is best suited for maintaining projects in their most basic form.

Index Terms- Networking, Internet, and Password, commands, protocols

I. INTRODUCTION

A requirement is a property or constraint that the system must meet in order for the client to accept it. Eliciting requirements and analysing them are the two basic processes involved in defining requirements. For a successful login, the system should accept the user name and password as input from the organization's administration. The database collects the user's information and assigns the new account holder a new login id. If the user already exists, he will check the database for the user name and password. The administrator saves the data after assigning the account number. If the account holder forgets his password, he can retrieve it by answering a few questions in the database.

For successful login, the system should accept the Username and Password input from the organization's users. He executes transactions such as sending and receiving messages, as well as sending and receiving invitations to his friends, after successfully logging in.

is a planning procedure for a new or changed system. The function of a new or changed system is defined by analysis. Design explains how to achieve the same result. Design is essentially a link between the statement of criteria and the final

solution that meets those needs. A system's design is simply a blueprint or a solution for it.

II. EXISTING WORK OR LITERATURE SURVEY

The following actions are included in the creation of the new system, which aim to automate the entire process while keeping the database integration approach in mind. The application provides user friendliness through many controls. The system makes project management much easier and more versatile in general. It is accessible over the internet. A large amount of data can be saved. While the project is being developed, there is no risk of data mishandling at any level. The administrator's, owner's, developer's, and subcontractor's relationships may be readily managed. It delivers a high level of security by utilising various protocols such as https.

Name	Description
Project Charter	Document identifying how the project will be managed
Business Requirement Specification	Document identifying the requirements for the project
Weekly Reports	Status reports to be issued weekly

Because the user must type the dbase commands, it is a time-consuming process. He has to recall all of the challenging commands. It is restricted to a single operating system. A user who just needs a little amount of information must contact the administrator each time. They are only able to store 2500 records using MS-Access. The current system is extremely insecure. It didn't include all of the modules. Making decisions was challenging. Keeping track of several records is too complex.

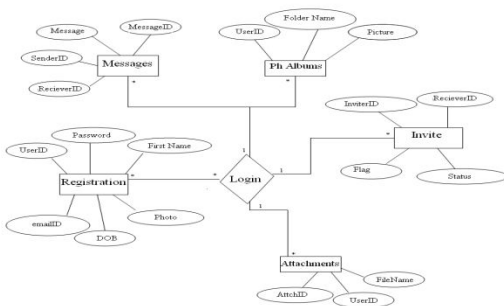
III. PROPOSED WORK

The following actions are included in the creation of the new system, which aim to automate the entire process while keeping the database integration approach in mind. The application provides user friendliness through many controls.

The system makes project management much easier and more versatile in general. It is accessible over the internet. A large amount of data can be saved. While the project is being developed, there is no risk of data mishandling at any level. The administrator's, owner/ developer's, and subcontractor's relationships may be readily managed. It delivers a high level of security by utilising various protocols such as https. With the purpose of establishing a new system, to increase communication among developers, clients, and users. It is costly to repair any faults that occur during this process. This section focuses on describing the system's purpose. The customer, the developers, and the users identify a problem area and create a system to solve it. This is known as a system specification, and it acts as a contract between the client and the developers.

The project is divided into three modules: 1. ADMINISTRATOR
2. PROJECT MANAGER

3. DEVELOPER

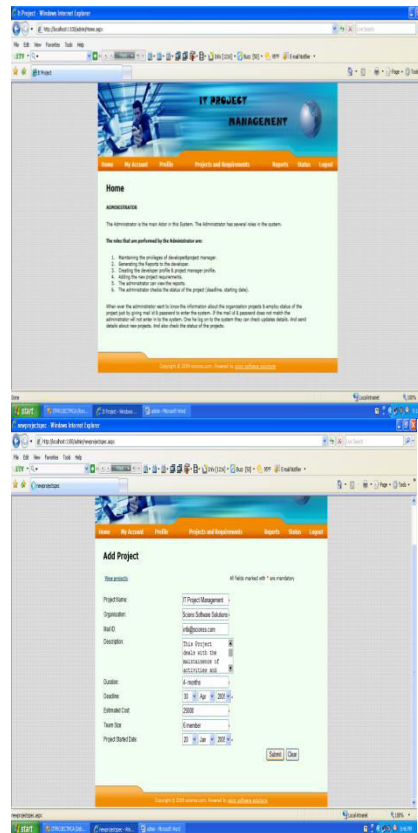


An object is in a specific state at any given time. Change in a system can be described as the state of its objects changing in response to events and time. Objects interact with one another in a working system, and these interactions take place throughout time. The UML Sequence Diagrams depict the interaction's time-based dynamics. The sequence diagrams consist of objects represented in the usual way—as named rectangles (If the name underlined), messages represented as solid line arrows and time represented as a vertical progression.

State chart diagrams depict behaviour in terms of specific object states and possible state transitions. The state of a system's objects changes in response to events and time, which is one approach to characterise change in a system. This also illustrates where a sequence of state transitions begins and ends. State chart diagrams are useful for describing domain objects with intriguing behaviour during system design. It is not required to provide state chart diagrams for each object; instead, for those things that exhibit complicated behaviour, it is sufficient to indicate the state transition.

The project deployment of software to business units so that they can use it from a specific date/time is insufficient on its own. Managing business transformation is an important component of project delivery, and it should involve the following: Increasing awareness of the software solution within the company through communication. Stakeholder engagement is helping to build business support and momentum for using the solution. Creating and implementing a training programme for business users and administrators. Business plan to maximise the solution's use and increase the number of users. Creating and maintaining a client board to track the solution's progress.

IV. RESULTS AND DISCUSSION (IF ANY)

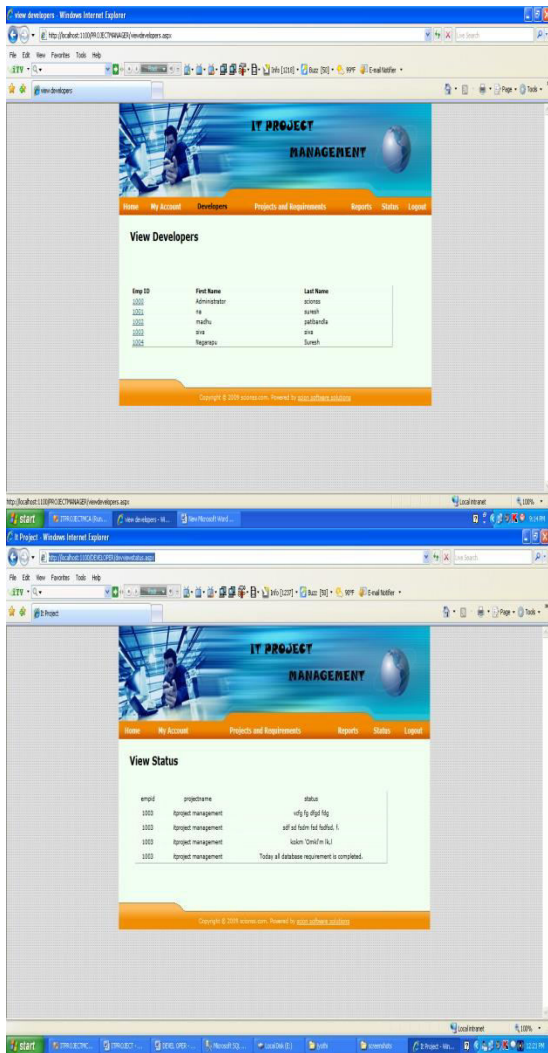


In its key feature, the system's power is to keep track of all on-line information, which allows management to know the present status of the organization's activities by just glancing through system-generated details.

Every quality factor has been taken into account when developing the system. As a result, the system is very resistant to the problem of crashing. Furthermore, the system is extremely dependable, and unauthorised users are unable to access it due to the system's security and integrity characteristics.

REFERENCES

- [1] The books and manuals listed below were extremely helpful in making this endeavour a reality.
- [2] R. E. FAIRELY, R. E. FAIRELY, R. E. FAIRELY, R. E. FAIRELY, R. E. FAIRELY, R. E. FAIRELY, R. E. FAIRELY, R. E. FAIRELY, R. E. FA
- [3] ELMASRI & NAVA: FUNDAMENTALS OF DATABASE SYSTEMS
- [4] ELIAS M AWAD GALGOTIA ANALYSIS AND DESIGN OF THE ADDISON WESLY SYSTEM
IN SQLSERVER2000, MASTER



A mail server can be used to transmit messages straight from the system to the recipient's inbox. Except for the mail server, everything of the necessary code is being implemented. It is possible to include a help file. As of present, the system does not provide any kind of assistance to its users. With a special function key and help command on the main page, a help menu can be created. Help can be displayed in a separate window, as a link to a printed manual, or as a one- or two-line recommendation in a fixed screen location.