



# International Journal for Innovative Engineering and Management Research

A Peer Reviewed Open Access International Journal

www.ijiemr.org

## COPY RIGHT

**2017 IJIEMR.** Personal use of this material is permitted. Permission from IJIEMR must be obtained for all other uses, in any current or future media, including reprinting/republishing this material for advertising or promotional purposes, creating new collective works, for resale or redistribution to servers or lists, or reuse of any copyrighted component of this work in other works. No Reprint should be done to this paper, all copy right is authenticated to Paper Authors

IJIEMR Transactions, online available on 26<sup>th</sup> Sept2017. Link

[:http://www.ijiemr.org/downloads.php?vol=Volume-6&issue=ISSUE-8](http://www.ijiemr.org/downloads.php?vol=Volume-6&issue=ISSUE-8)

Title: **MODELLING AND SIMULATION OF IUPQC BASED FUZZY CONTROLLER TO IMPROVE GRID VOLTAGE REGULATION**

Volume 06, Issue 08, Pages: 349– 359.

Paper Authors

**UPPALA GIRISH, NIRMALA JYOTHI M.tech**

Velaga Nageswara Rao College of Engineering & Technology, Ponnur, A.P, India.



USE THIS BARCODE TO ACCESS YOUR ONLINE PAPER

To Secure Your Paper As Per **UGC Guidelines** We Are Providing A Electronic Bar Code

## MODELLING AND SIMULATION OF IUPQC BASED FUZZY CONTROLLER TO IMPROVE GRID VOLTAGE REGULATION

<sup>1</sup>UPPALA GIRISH, <sup>2</sup>NIRMALA JYOTHI M.tech

<sup>1</sup>M.Tech Student Scholar, Department of EEE, Velaga Nageswara Rao College of Engineering & Technology, Ponnur, A.P, India.

<sup>2</sup>Assistant Professor, Department of EEE, Velaga Nageswara Rao College of Engineering & Technology, Ponnur, A.P, India

**ABSTRACT**-This paper presents using fuzzy logic an improved controller for the dual topology of the unified power quality conditioner (iUPQC) extending its applicability in power-quality compensation, as well as in microgrid applications. Beyond the conventional UPQC power quality features, including voltage sag/swell compensation, the iUPQC will also provide reactive power support to regulate not only the load-bus voltage but also the voltage at the gridside bus by using this controller. The iUPQC will work as a static synchronous compensator (STATCOM) at the grid side, while providing also the conventional UPQC compensations at the load or microgrid side by using fuzzy. Simulation results are provided to verify the new functionality of the equipment.

**Key Words**- iUPQC, microgrids, power quality, static synchronous compensator (STATCOM), Unified Power Quality Conditioner (UPQC), Fuzzy Logic Controller.

### I. INTRODUCTION

In contrast, power-electronics-driven loads generally require ideal sinusoidal supply voltage in order to function properly, whereas they are the most responsible ones for abnormal harmonic currents level in the distribution system. In this scenario, devices that can mitigate these drawbacks have been developed over the years. Certainly, power electronics devices have brought about great technological improvements. However, the increasing number of power-electronics-driven loads used generally in the industry has brought about uncommon power quality problems. Some of the solutions involve a flexible compensator, known as the unified power quality conditioner (UPQC) [1] and the static synchronous compensator (STATCOM) [2]. Power circuit of

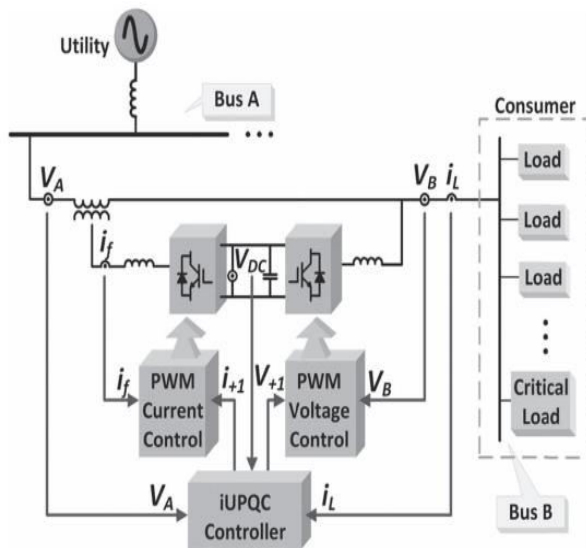
a UPQC consists of the combination of a shunt active filter and a series active filter connected in a back-to-back configuration. This combination allows the simultaneous compensation of the load current and the supply voltage, so that the compensated current drawn from the grid and the compensated supply voltage delivered to the load are kept balanced and sinusoidal. The fuzzy logic and dual topology of the UPQC, i.e., the iUPQC, was presented in [3]–[5], where the shunt active filter behaves as an ac-voltage source and the series one as an ac-current source, both at the fundamental frequency. This is a key point to better design the control gains, as well as to optimize the LCL filter of the power converters, which allows improving significantly the overall

performance of the compensator [6]. Dynamic reactive power compensation that means of the STATCOM has been used widely in transmission networks to regulate the voltage. Nowadays, the STATCOM is largely used for voltage regulation [7], whereas the UPQC and the iUPQC and fuzzy logic control have been selected as solution for more specific applications [8]. Moreover, these last ones are used only in particular cases, where their relatively high costs are justified by the power quality improvement it can provide, which would be unfeasible by using conventional solutions. By joining the extra functionality like a STATCOM in the iUPQC device, a wider scenario of applications can be reached, particularly in case of distributed generation in smart grids and as the coupling device in grid-tied micro grids. In [9-11], the performance of the iUPQC and the UPQC was compared when working as UPQCs. The main difference between these compensators is the sort of source emulated by the series and shunt power converters. In the UPQC approach, the series converter is controlled as a nonsinusoidal voltage source and the shunt one as a nonsinusoidal current source. Hence, in real time, the UPQC controller and fuzzy logic controller has to determine and synthesize accurately the harmonic voltage and current to be compensated. On the other hand, in the iUPQC approach, the series converter behaves as a controlled sinusoidal current source and the shunt converter as a controlled sinusoidal voltage source [12]. It is not necessary to determine the harmonic voltage and current to be compensated, since the harmonic voltages appear naturally across the series current source and the harmonic currents

flow naturally into the shunt voltage source. As the switching frequency increases, the power rate capability is reduced in actual power converters. Therefore, the iUPQC offers better solutions if compared with the UPQC in case of highpower applications, since the iUPQC compensating references are pure sinusoidal waveforms at the fundamental frequency [13-15]. Moreover, the UPQC has higher switching losses due to its higher switching frequency. This paper proposes an using fuzzy logic controller, which expands the iUPQC functionalities. This fuzzy logic controller version of iUPQC controller includes all functionalities of those previous ones, including the voltage regulation at the load-side bus, and now providing also voltage regulation at the grid-side bus, like a STATCOM to the grid. Simulation results are provided to validate the new controller design.

## **II. EQUIPMENT APPLICABILITY**

In order to clarify the applicability of the improved iUPQC controller, fig.1 depicts an electrical system with two buses in spotlight, i.e., bus A and bus B. Bus A is a critical bus of the power system that supplies sensitive loads and serves as point of coupling of a microgrid. Bus B is a bus of the microgrid, where nonlinear loads are connected, which requires premium-quality power supply. The voltages at buses A and B must be regulated, in order to properly supply the sensitive loads and the nonlinear loads. The effects caused by the harmonic currents drawn by the nonlinear loads should be mitigated, avoiding harmonic voltage propagation to bus A.



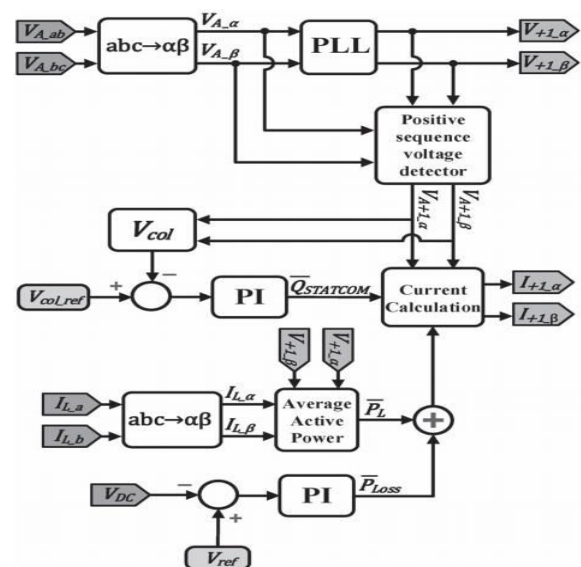
**Fig.1. Modified iUPQC Configuration**

The use of a STATCOM to guarantee the voltage regulation at bus A is not enough because the harmonic currents drawn by the nonlinear loads are not mitigated. On the other hand, a UPQC or an iUPQC between bus A and bus B can compensate the harmonic currents of the nonlinear loads and compensate the voltage at bus B, in terms of voltage harmonics, unbalance, and sag/swell. Nevertheless, this is still not enough to guarantee the voltage regulation at bus A. Hence, to achieve all the desired goals, a STATCOM at bus A and a UPQC (or an iUPQC) between buses A and B should be employed. However, the costs of this solution would be unreasonably high. An attractive solution would be the use of a modified iUPQC controller to provide also reactive power support to bus A, in addition to all those functionalities of this equipment, as presented. Note that the modified iUPQC serves as an intertie between buses A and B. Moreover, the microgrid connected to the bus B could be a complex system comprising distributed generation, energy management system, and other control systems involving microgrid, as

well as smart grid concepts. In summary, the modified iUPQC can provide the following functionalities:

- “Smart” circuit breaker as an intertie between the grid and the microgrid;
- Energy and power flow control between the grid and the microgrid (imposed by a tertiary control layer for the microgrid);
- Reactive power support at bus A of the power system;
- voltage/frequency support at bus B of the microgrid;
- Harmonic voltage and current isolation between bus A and bus B (simultaneous grid-voltage and load-current active filtering capability);
- Voltage and current imbalance compensation.

The functionalities (d)–(f) previously listed were extensively explained and verified through simulations and experimental analysis, whereas the functionality (c) comprises the original contribution of the present work. Fig.2 depicts, in detail, the connections and measurements of the iUPQC between bus A and bus B.



**Fig.2. Novel iUPQC controller**

According to the conventional iUPQC controller, the shunt converter imposes a controlled sinusoidal voltage at bus B, which corresponds to the aforementioned functionality (d). As a result, the shunt converter has no further degree of freedom in terms of compensating active- or reactive-power variables to expand its functionality. On the other hand, the series converter of a conventional iUPQC uses only an active-power control variable  $p$ , in order to synthesize a fundamental sinusoidal current drawn from bus A, corresponding to the active power demanded by bus B. If the dc link of the iUPQC has no large energy storage system or even no energy source, the control variable  $p$  also serves as an additional active-power reference to the series converter to keep the energy inside the dc link of the iUPQC balanced. In this case, the losses in the iUPQC and the active power supplied by the shunt converter must be quickly compensated in the form of an additional active power injected by the series converter into the bus B.

The iUPQC can serve as:

- a) "Smart" circuit breaker and as
- b) Power flow controller between the grid and the microgrid only if the compensating active- and reactive-power references of the series converter can be set arbitrarily. In this case, it is necessary to provide an energy source (or large energy storage) associated to the dc link of the iUPQC. The last degree of freedom is represented by a reactive-power control variable  $\bar{q}$  for the series converter of the iUPQC. In this way, the iUPQC will provide reactive-power compensation like a STATCOM to the bus A of the grid. As it will be confirmed, this functionality can be added into the controller

without degrading all other functionalities of the iUPQC.

### III. IMPROVED IUPQC CONTROLLER

#### A. Main Controller

Fig.1. depicts the iUPQC hardware and the measured units of a three-phase three-wire system that are used in the controller. Fig.2. shows the proposed controller. The controller inputs are the voltages at buses A and B, the current demanded by bus B ( $i_L$ ), and the voltage  $v_{DC}$  of the common dc link. The outputs are the shunt-voltage reference and the series-current reference to the pulse width modulation (PWM) controllers. The voltage and current PWM controllers can be as simple as those employed, or be improved further to better deal with voltage and current imbalance and harmonics. First, the simplified Clark transformation is applied to the measured variables. As an example of this transformation, the grid voltage in the  $\alpha\beta$ -reference frame can be calculated as

$$\begin{bmatrix} V_{A\_ \alpha} \\ V_{A\_ \beta} \end{bmatrix} = \begin{bmatrix} 1 & 1/2 \\ 0 & \sqrt{3}/2 \end{bmatrix} \begin{bmatrix} V_{A\_ ab} \\ V_{A\_ bc} \end{bmatrix} \quad (1)$$

The shunt converter imposes the voltage at bus B. Thus, it is necessary to synthesize sinusoidal voltages with nominal amplitude and frequency. Consequently, the signals sent to the PWM controller are the phase-locked loop (PLL) outputs with amplitude equal to 1 p.u. In the original iUPQC approach as presented, the shunt-converter voltage reference can be the PLL outputs or the fundamental positive-sequence component  $V_{A+1}$  of the grid voltage (bus A in Fig.1.). The use of  $V_{A+1}$  in the controller is useful to minimize the circulating power through the series and shunt converters, under normal operation, while the amplitude of the grid voltage is within an acceptable range of

magnitude. However, this is not the case here, in the modified iUPQC controller, since now the grid voltage will be also regulated by the modified iUPQC. In other words, both buses will be regulated independently to track their reference values. The series converter synthesizes the current drawn from the grid bus (bus A). In the original approach of iUPQC, this current is calculated through the average active power required by the loads  $\bar{P}_L$  plus the power  $\bar{P}_{Loss}$ . The load active power can be estimated by

$$P_L = V_{+1\_a} \cdot i_{L\_a} + V_{+1\_b} \cdot i_{L\_b} \quad (2)$$

Where  $i_{L\_a}$ ,  $i_{L\_b}$  are the load currents, and  $V_{+1\_a}$ ,  $V_{+1\_b}$  are the voltage references for the shunt converter. A low-pass filter is used to obtain the average active power ( $\bar{P}_L$ ).

The losses in the power converters and the circulating power to provide energy balance inside the iUPQC are calculated indirectly from the measurement of the dc-link voltage. In other words, the power signal  $\bar{P}_{Loss}$  is determined by a proportional– integral (PI) controller (PI block in Fig. 2), by comparing the measured dc voltage  $V_{DC}$  with its reference value.

The additional control loop to provide voltage regulation like a STATCOM at the grid bus is represented by the control signal  $\bar{Q}_{STATCOM}$  in Fig.2. This control signal is obtained through a PI controller, in which the input variable is the error between the reference value and the actual aggregate voltage of the grid bus, given by

$$V_{col} = \sqrt{V_{A+1\_a}^2 + V_{A+1\_b}^2} \quad (3)$$

The sum of the power signals  $\bar{P}_L$  and  $\bar{P}_{Loss}$  composes the active-power control variable for

the series converter of the iUPQC ( $\bar{p}$ ) described in Section II. Likewise,  $\bar{Q}_{STATCOM}$  is the reactive-power control variable  $q$ . Thus, the current references  $i_{+1\alpha}$  and  $i_{+1\beta}$  of the series converter are determined by

$$\begin{bmatrix} i_{+1\_a} \\ i_{+1\_b} \end{bmatrix} = \frac{1}{V_{A+1\_a}^2 + V_{A+1\_b}^2} \begin{bmatrix} V_{A+1\_a} & V_{A+1\_b} \\ V_{A+1\_b} & -V_{A+1\_a} \end{bmatrix} \times \begin{bmatrix} \bar{P}_L + \bar{P}_{Loss} \\ \bar{Q}_{STATCOM} \end{bmatrix} \quad (4)$$

## B. Power Flow in Steady State

The following procedure, based on the average power flow, is useful for estimating the power ratings of the iUPQC converters. For combined series–shunt power conditioners, such as the UPQC and the iUPQC, only the voltage sag/swell disturbance and the power factor (PF) compensation of the load produce a circulating average power through the power conditioners. According to Fig.3, the compensation of a voltage sag/swell disturbance at bus B causes a positive sequence voltage at the coupling transformer ( $V_{series} \neq 0$ ), since  $V_A \neq V_B$ . Moreover,  $V_{series}$  and  $i_{PB}$  in the coupling transformer leads to a circulating active power  $\bar{P}_{inner}$  in the iUPQC.

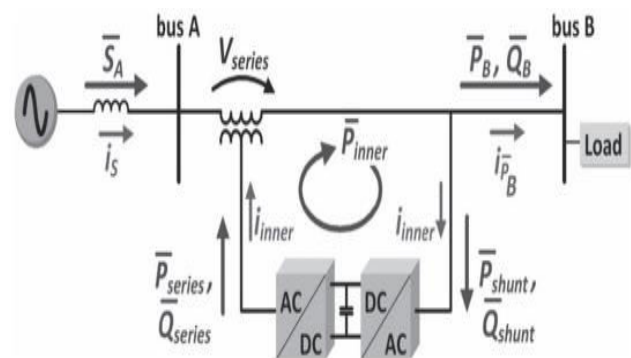


Fig.3. iUPQC power flow in steady-state

Additionally, the compensation of the load PF increases the current supplied by the shunt converter. The following analysis is valid for an iUPQC acting like a conventional UPQC or including the extra compensation like a STATCOM.

First, the circulating power will be calculated when the iUPQC is operating just like a conventional UPQC. Afterward, the equations will include the STATCOM functionality to the grid bus A. In both cases, it will be assumed that the iUPQC controller is able to force the shunt converter of the iUPQC to generate fundamental voltage always in phase with the grid voltage at bus A. For simplicity, the losses in the iUPQC will be neglected. For the first case, the following average powers in steady state can be determined:

$$\bar{S}_A = \bar{P}_B \quad (5)$$

$$\bar{Q}_{shunt} = -\bar{Q}_B \quad (6)$$

$$\bar{Q}_{series} = \bar{Q}_A = 0 \text{ var} \quad (7)$$

$$\bar{P}_{series} = \bar{P}_{shunt} \quad (8)$$

Where  $\bar{S}_A$  and  $\bar{Q}_A$  are the apparent and reactive power injected in the bus A;  $\bar{P}_B$  and  $\bar{Q}_B$  are the active and reactive power injected in the bus B;  $\bar{P}_{shunt}$  and  $\bar{Q}_{shunt}$  are the active and reactive power drained by the shunt converter;  $\bar{P}_{series}$  and  $\bar{Q}_{series}$  are the active and reactive power supplied by the series converter, respectively. Equations (5) and (8) are derived from the constraint of keeping unitary the PF at bus A. In this case, the current passing through the series converter is responsible only for supplying the load active power, that is, it is in phase (or counter phase) with the voltages  $V_A$  and  $V_B$ . Thus, (7) can be stated. If a voltage sag or swell occurs,  $\bar{P}_{series}$  and  $\bar{P}_{shunt}$  will not be zero, and thus, an inner-loop current ( $i_{inner}$ ) will appear. The series and shunt converters and

the aforementioned circulating active power ( $\bar{P}_{inner}$ ) flow inside the equipment. It is convenient to define the following sag/swell factor. Considering  $V_N$  as the nominal voltage

$$k_{sag/swell} = \frac{|\dot{V}_A|}{|\dot{V}_N|} = \frac{V_A}{V_N} \quad (9)$$

From (5) and considering that the voltage at bus B is kept regulated, i.e.,  $V_B = V_N$ , it follows that

$$\begin{aligned} \sqrt{3} \cdot k_{sag/swell} \cdot V_N \cdot i_S &= \sqrt{3} \cdot V_N \cdot i_{P_B} \\ i_S &= \frac{i_{P_B}}{k_{sag/swell}} = i_{\bar{P}_B} + i_{inner} \end{aligned} \quad (10)$$

$$i_{inner} = \left| i_{P_B} \left( \frac{1}{K_{sag/swell} - 1} \right) \right| \quad (11)$$

The circulating power is given by

$$\bar{P}_{inner} = \bar{P}_{series} = \bar{P}_{shunt} = 3(V_B - V_A)(i_{P_B} + i_{inner}) \quad (12)$$

From (11) and (12), it follows that

$$\bar{P}_{inner} = 3(V_N - V_A) \left( \frac{\bar{P}_B}{3V_N k_{sag/swell}} \right) \quad (13)$$

$$\bar{P}_{inner} = \bar{P}_{series} = \bar{P}_{shunt} = \frac{1 - K_{sag/swell}}{k_{sag/swell}} \bar{P}_B \quad (14)$$

Thus, (14) demonstrates that  $\bar{P}_{inner}$  depends on the active power of the load and the sag/swell voltage disturbance. In order to verify the effect on the power rate of the series and shunt converters, a full load system  $\bar{S}_B = \sqrt{\bar{P}_B^2 + \bar{Q}_B^2} = 1 \text{ p.u.}$  with PF ranging from 0 to 1 was considered. It was also considered the

sag/swell voltage disturbance at bus A ranging  $k_{\text{sag/swell}}$  from 0.5 to 1.5. In this way, the power rating of the series and shunt converters are obtained through (6)–(8) and (14). The apparent power of the series and shunt power converters. In these figures, the  $k_{\text{sag/swell}}$ -axis and the PF-axis are used to evaluate the power flow in the series and shunt power converters according to the sag/swell voltage disturbance and the load power consumption, respectively. The power flow in the series converter indicates that a high power is required in case of sag voltage disturbance with high active power load consumption. In this situation, an increased  $\bar{P}_{\text{inner}}$  arises and high rated power converters are necessary to ensure the disturbance compensation. Moreover, in case of compensating sag/swell voltage disturbance with high reactive power load consumption, only the shunt converter has high power demand, since  $\bar{P}_{\text{inner}}$  decreases. It is important to highlight that, for each PF value, the amplitude of the apparent power is the same for capacitive or inductive loads. In other words, the same for  $\bar{Q}_B$  capacitive or inductive. If the iUPQC performs all original UPQC functionalities together with the STATCOM functionality, the voltage at bus A is also regulated with the same phase and magnitude, that is,  $\dot{V}_A = \dot{V}_B = \dot{V}_N$ , and then, the positive sequence of the voltage at the coupling transformer is zero ( $\bar{V}_{\text{series}}=0$ ). Thus, in steady state, the power flow is determined by

$$\bar{S}_A = \bar{P}_B + \bar{Q}_{\text{STATCOM}} \quad (15)$$

$$\bar{Q}_{\text{STATCOM}} + \bar{Q}_{\text{series}} = \bar{Q}_{\text{shunt}} + \bar{Q}_B \quad (16)$$

$$\bar{Q}_{\text{series}} = 0 \text{ var} \quad (17)$$

$$\bar{P}_{\text{series}} = \bar{P}_{\text{inner}} = 0 \text{ W} \quad (18)$$

Where  $\bar{Q}_{\text{STATCOM}}$  is the reactive power that provides voltage regulation at bus A. Ideally, the STATCOM functionality mitigates the inner-loop active power flow ( $\bar{P}_{\text{inner}}$ ), and the power flow in the series converter is zero. Consequently, if the series converter is properly designed along with the coupling transformer to synthesize the controlled currents  $I_{+1_\alpha}$  and  $I_{+1_\beta}$ , as shown in Fig.3, then a lower power converter can be employed. Contrarily, the shunt converter still has to provide the full reactive power of the load and also to drain the reactive power injected by the series converter to regulate the voltage at bus A.

## IV. FUZZY LOGIC CONTROL

### ➤ Fuzzification

The first step in the design of a fuzzy logic controller is to define membership functions for the inputs. Seven fuzzy levels or sets are chosen and defined by the following library of fuzzy-set values for the error and change in error. They are as follows

- NB negative big
- NM negative medium
- NS negative small
- ZE zero equal
- PS positive small
- PM positive medium
- PB positive big
- ❖ The number of fuzzy levels is not fixed and depends on the input resolution needed in an application.
- ❖ The larger the number of fuzzy levels, the higher is the input resolution.
- ❖ The fuzzy controller utilizes triangular membership functions on the controller input. The triangular membership



function is chosen due to its simplicity. For a given crisp input, fuzzifier finds the degree of membership in every linguistic variable.

- ❖ Since there are only two overlapping memberships in this specific case, all linguistic variables except two will have zero membership.

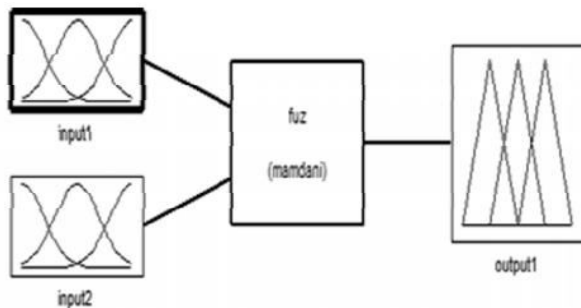


Fig.4. Block diagram of the Fuzzy Logic Controller (FLC) for proposed converter.

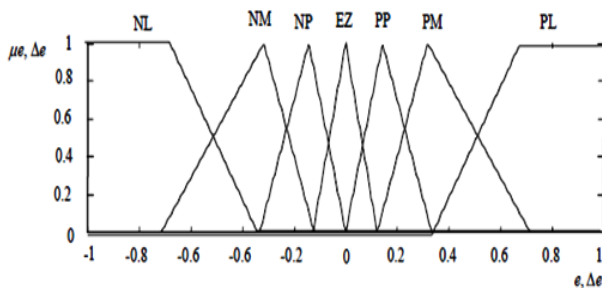


Fig.5. Membership functions for Input, Change in input, Output.

**Rule Base:** the elements of this rule base table are determined based on the theory that in the transient state, large errors need coarse control, which requires coarse input/output variables; in the steady state, small errors need fine control, which requires fine input/output variables. Based on this the elements of the rule table are obtained as shown in Table 1, with 'V<sub>dc</sub>' and 'V<sub>dc-ref</sub>' as inputs.

- When the output of the converter is far from the set point, the change of duty cycle must be

large so as to bring the output to the set point quickly.

- When the output of the converter is approaching the set point, a small change of duty cycle is necessary.
- When the output of the converter is near the set point and is approaching it rapidly, the duty cycle must be kept constant so as to prevent overshoot.
- When the set point is reached and the output is still changing, the duty cycle must be changed a little bit to prevent the output from moving away.
- When the set point is reached and the output is steady, the duty cycle remains unchanged. When the output is above the set point, the sign of the change of duty cycle must be negative, and vice versa.

$e \backslash \Delta e$	NL	NM	NS	EZ	PS	PM	PL
NL	NL	NL	NL	NL	NM	NS	EZ
NM	NL	NL	NL	NM	NS	EZ	PS
NS	NL	NL	NM	NS	EZ	PS	PM
EZ	NL	NM	NS	EZ	PS	PM	PL
PS	NM	NS	EZ	PS	PM	PL	PL
PM	NS	EZ	PS	PM	PL	PL	PL
PL	NL	NM	NS	EZ	PS	PM	PL

## V. MATLAB/SIMULATION RESULTS

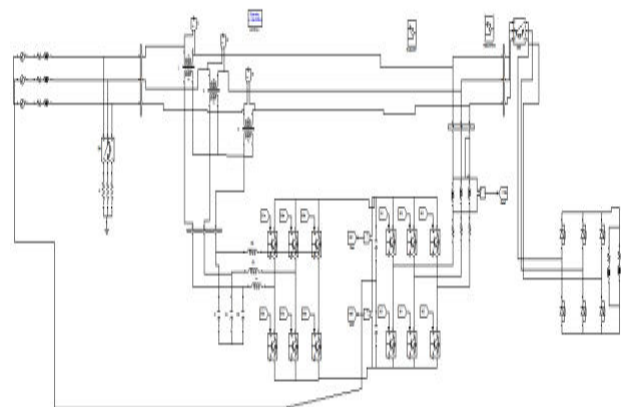


Fig 6 Matlab/simulation circuit for conventional method of iUPQC

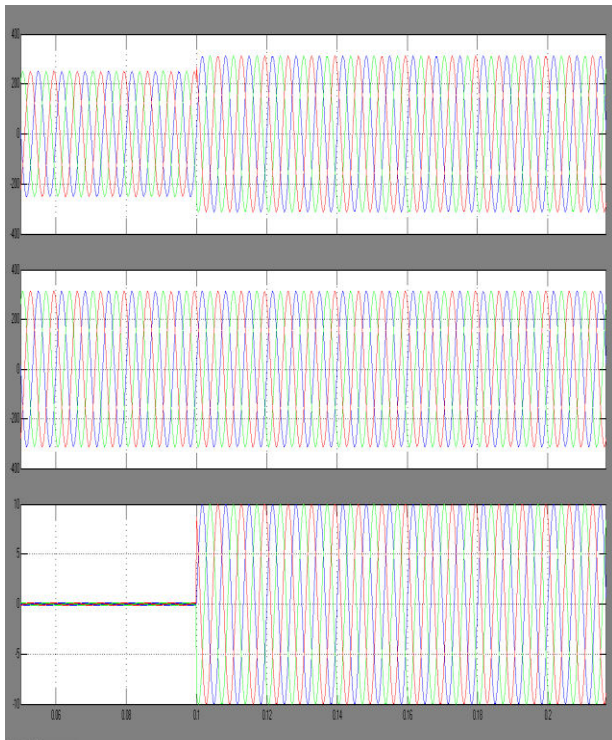


Fig.7.iUPQC response at no load condition: (a) grid voltages VA, (b) load voltages VB, and (c) grid currents.

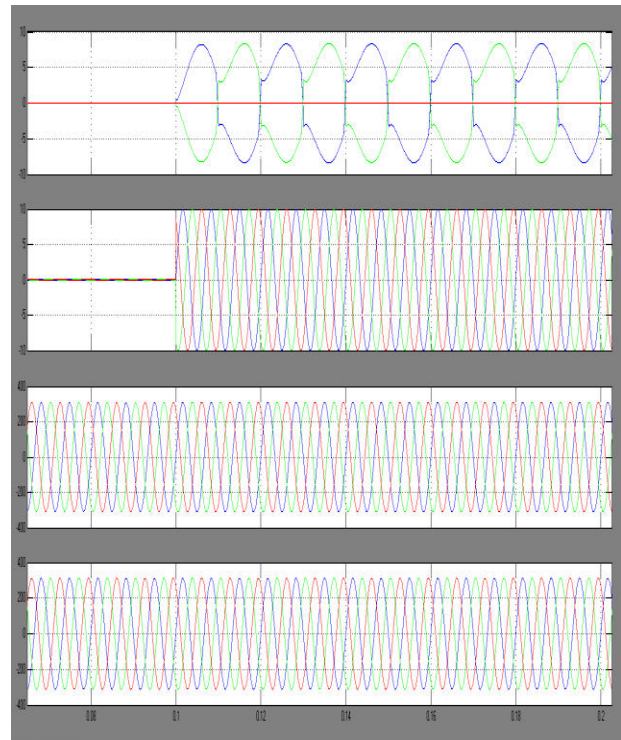


Fig.9. iUPQC transitory response during the connection of a two phase diode rectifier: (a) load currents, (b) source currents, (c) load voltages, and (d) source voltages.

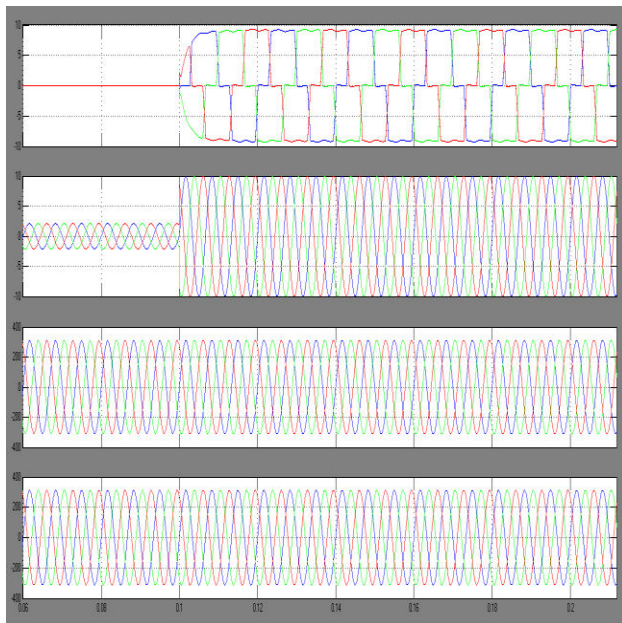


Fig.8. iUPQC transitory response during the connection of a three phase diode rectifier: (a) load currents, (b) grid currents, (c) load voltages and (d) grid voltages.

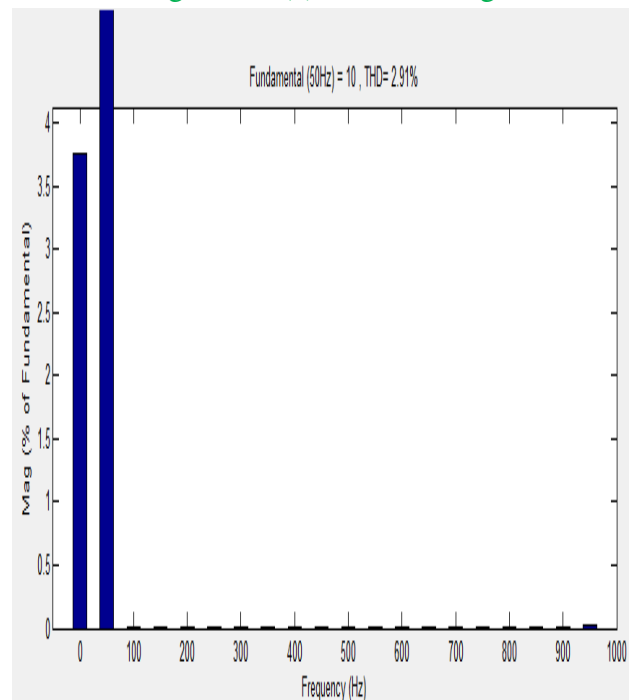


Fig.10.TH D for PI Controller

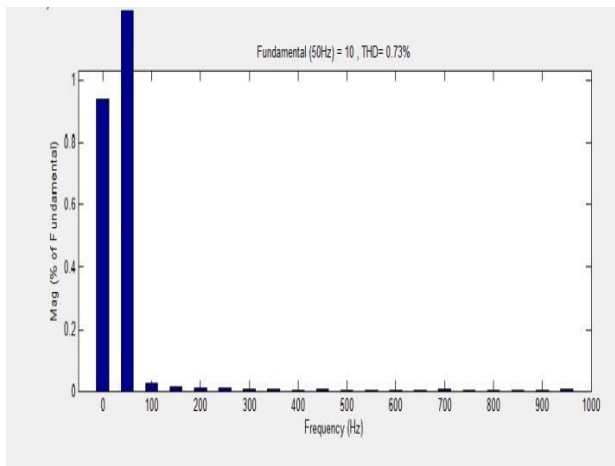


Fig.11. THD for Fuzzy logic Controller

## VI. CONCLUSION

By using fuzzy logic control to improved iUPQC controller, the currents synthesized by the series converter are determined by the average active power of the load and the active power to provide the dc-link voltage regulation, together with an average reactive power to regulate the grid-bus voltage. In addition to all the power-quality compensation features and fuzzy logic of a conventional UPQC or an iUPQC, this improved controller also mimics a STATCOM to the grid bus. This new feature enhances the applicability of the iUPQC and provides new solutions in future scenarios involving smart grids and micro grids, including distributed generation and energy storage systems to better deal with the inherent variability of renewable resources such as solar and wind power. Despite the addition of one more power-quality compensation feature, the grid-voltage regulation reduces the inner-loop circulating power inside the iUPQC, which would allow lower power rating for the series converter. Moreover, the improved iUPQC controller may justify the costs and promotes the iUPQC applicability in power quality issues of critical systems, where it is necessary not

only an iUPQC or a STATCOM, but both, simultaneously. These results have demonstrated a suitable performance of voltage regulation at both sides of the iUPQC, even while compensating harmonic current and voltage imbalances. The simulation results verified the improved iUPQC goals. The grid-voltage regulation was achieved with no load, as well as when supplying a three-phase nonlinear load.

## REFERENCES

- [1] K. Karanki, G. Geddada, M. K. Mishra, and B. K. Kumar, "A modified three-phase four-wire UPQC topology with reduced DC-link voltage rating," *IEEE Trans. Ind. Electron.*, vol. 60, no. 9, pp. 3555–3566, Sep. 2013.
- [2] V. Khadkikar and A. Chandra, "A new control philosophy for a unified power quality conditioner (UPQC) to coordinate load-reactive power demand between shunt and series inverters," *IEEE Trans. Power Del.*, vol. 23, no. 4, pp. 2522–2534, Oct. 2008.
- [3] K. H. Kwan, P. L. So, and Y. C. Chu, "An output regulation-based unified power quality conditioner with Kalman filters," *IEEE Trans. Ind. Electron.*, vol. 59, no. 11, pp. 4248–4262, Nov. 2012.
- [4] A. Mokhtatpour and H. A. Shayanfar, "Power quality compensation as well as power flow control using of unified power quality conditioner," in *Proc. APPEEC*, 2011, pp. 1–4.
- [5] J. A. Munoz et al., "Design of a discrete-time linear control strategy for a multicell UPQC," *IEEE Trans. Ind. Electron.*, vol. 59, no. 10, pp. 3797–3807, Oct. 2012.
- [6] V. Khadkikar and A. Chandra, "UPQC-S: A novel concept of simultaneous voltage sag/swell and load reactive power compensations utilizing series inverter of UPQC," *IEEE Trans. Power*



Electron., vol. 26, no. 9, pp. 2414–2425, Sep. 2011.

[7] V. Khadkikar, “Enhancing electric power quality using UPQC: A comprehensive overview,” *IEEE Trans. Power Electron.*, vol. 27, no. 5, pp. 2284–2297, May 2012.

[8] L. G. B. Rolim, “Custom power interfaces for renewable energy sources,” in *Proc. IEEE ISIE*, 2007, pp. 2673–2678.

[9] N. Voraphonpipit and S. Chatratana, “STATCOM analysis and controller design for power system voltage regulation,” in *Proc. IEEE/PES Transmiss. Distrib. Conf. Exhib.—Asia Pac.*, 2005, pp. 1–6.

[10] J. J. Sanchez-Gasca, N. W. Miller, E. V. Larsen, A. Edris, and D. A. Bradshaw, “Potential benefits of STATCOM application to improve generation station performance,” in *Proc. IEEE/PES Transmiss. Distrib. Conf. Expo.*, 2001, vol. 2, pp. 1123–1128.

[11] A. P. Jayam, N. K. Ardesna, and B. H. Chowdhury, “Application of STATCOM for improved reliability of power grid containing a windturbine,” in *Proc. IEEE Power Energy Soc. Gen. Meet.—Convers. Del. Elect. Energy 21st Century*, 2008, pp. 1–7.

[12] C. A Sepulveda, J. A Munoz, J. R. Espinoza, M. E. Figueroa, and P. E. Melin, “All-on-chip dq-frame based D-STATCOM control implementation in a low-cost FPGA,” *IEEE Trans. Ind. Electron.*, vol. 60, no. 2, pp. 659–669, Feb. 2013.

[13] B. Singh and S. R. Arya, “Back-propagation control algorithm for power quality improvement using DSTATCOM,” *IEEE Trans. Ind. Electron.*, vol. 61, no. 3, pp. 1204–1212, Mar. 2014.

[14] M. Aredes and R. M. Fernandes, “A dual topology of unified power quality conditioner:

The iUPQC,” in *Proc. EPE Conf. Appl.*, 2009, pp. 1–10.

[15] M. Aredes and R. M. Fernandes, “A unified power quality conditioner with voltage sag/swell compensation capability,” in *Proc. COBEP*, 2009, pp. 218–224.