



International Journal for Innovative Engineering and Management Research

A Peer Reviewed Open Access International Journal

www.ijiemr.org

COPY RIGHT



ELSEVIER
SSRN

2023IJIEMR. Personal use of this material is permitted. Permission from IJIEMR must be obtained for all other uses, in any current or future media, including reprinting/republishing this material for advertising or promotional purposes, creating new collective works, for resale or redistribution to servers or lists, or reuse of any copyrighted component of this work in other works. No Reprint should be done to this paper, all copy right is authenticated to Paper Authors

IJIEMR Transactions, online available on 06th Feb 2023. Link

[:http://www.ijiemr.org/downloads.php?vol=Volume-12&issue=ISSUE-02](http://www.ijiemr.org/downloads.php?vol=Volume-12&issue=ISSUE-02)

DOI: 10.48047/IJIEMR/V12/ISSUE 02/21

Title Categorization of Disabled Population in Andhra Pradesh Using Data Visualization

Volume 12, Issue 02, Pages: 136-138

Paper Authors

B. Jahnvi , G.Bhavya, Dr.B.V.Subba Rao, Dr.S.Sai Kumar, Dr.G.Lakshmi



USE THIS BARCODE TO ACCESS YOUR ONLINE PAPER

To Secure Your Paper As Per **UGC Guidelines** We Are Providing A Electronic Bar Code

Categorization of Disabled Population in Andhra Pradesh Using Data Visualization

¹B. Jahnvi , ²G.Bhavya, ³Dr.B.V.Subba Rao, ⁴Dr.S.Sai Kumar, ⁵Dr.G.Lakshmi

^{1,2}III B.Tech Students, Department of IT, PVP Siddhartha Institute of Technology, AP, India

³Professor, Department of IT, PVP Siddhartha Institute of Technology, AP, India

^{4,5} Assistant Professor, Department of IT, PVP Siddhartha Institute of Technology, AP, India
saikumar@pvpsit.ac.in, glakshmi@pvpsiddhartha.ac.in

Abstract

This Application gives information about the Population of Disabled people in Andhra Pradesh using Tableau Software. Disability is the state that makes it difficult to do certain activities. Disabilities may be mental, physical or multiple factors. It can come from birth or can be acquired in the middle of people's lifetime. The main aim of this Application is to provide more opportunities to the people who do not have equitable access in society and to help the disabled people in different fields such as Education, Sports, Employment, Health services and to build Rehabilitation centers in the society.

Keywords: Disability, Data Visualization.

Introduction

Disability is a part of being human. Everyone will temporarily or permanently experience disability at some point in their life. Over 1 billion people 15% of the global population currently experience disability. People with disabilities facing health issues, have less access to education and work opportunities, and are more likely to live in poverty than normal people. People with disabilities often do not receive the health care services they need. Half of people with disabilities cannot afford health care.

Proposed System

This application provides the total count of disabled people in each district of Andhra Pradesh based on Gender, Age and type of disability. Through this application the government will be able to know which schemes have to be implemented in future to meet the needs of disabled people and how much money they need to spend on medical purposes. This application is useful for Social Welfare Organizations and Charities to know the population of disabled people in each area. These Charitable trusts and social welfare organizations uplift disabled people from poverty, empower women and promote health and comfort.

Technologies used

Microsoft Excel

Microsoft Excel is the most efficient tool. It is a spreadsheet program used for analysis, Data management, finance, complex calculations and to record and analyze numerical and statistical data. Microsoft Excel is compatible with multiple OS like windows, macOS, Android and iOS. It provides multiple features to perform various operations like pivot tables, graph tools, macro programming, etc. Excel is widely used for data analysis owing to the excellent data visualization features. The data visualization capability of Excel allows building insightful visualizations.

Tableau Software

Tableau software is a powerful Data visualization tool used in the Business Intelligence Industry. Tableau allows exploring excel data using its drag and drop feature. Tableau formats the data in Graphs, pie charts, maps, pictures that are easily understandable.

Files

After data analysis Tableau output can be saved in different formats. You can save your work using different Tableau specific file types such as bookmarks(.twb), workbooks(.tvm), data extracts(.tde), packaged data source(.tds). These files

should be saved with their specific extension. These files are saved in the associated folders in the My Tableau Repository directory.

Dashboard

A dashboard is a display collection of worksheets and related information in a single place. It is used to compare, monitor and visualize a variety of data simultaneously. The different data views are displayed all at once. While creating a dashboard, one can add views from any worksheet in the workbook along with many supporting objects such as text areas, web pages, and images.

Maps

This application needs a geographical location to plot the data on a map. To create a single map data source must contain location names along with latitude and longitude.

Server

Tableau server is a software application used to share worksheets which was created at Tableau Desktop. Once worksheets are uploaded to the server, it will be accessible to authorized users only.

Results

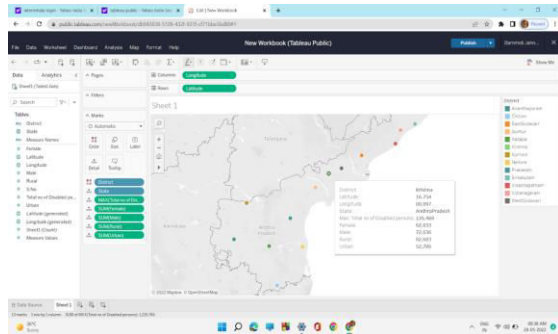


Figure 1.1

Figure 1.1 Shows the Total disabled people, Total Females, males and Number of disabled people in rural and Urban areas of Krishna District in Andhra Pradesh.

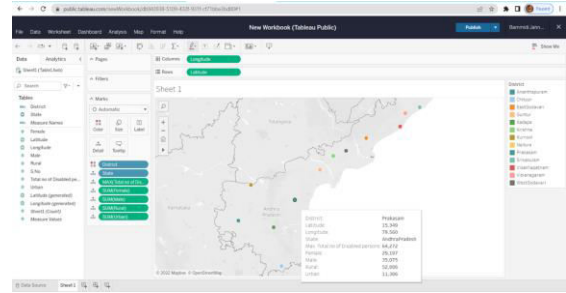


Figure 1.2

Figure 1.2 Shows the Total disabled people, Total Females, Males and number of disabled people in Rural and Urban areas of Prakasam District in Andhra Pradesh.

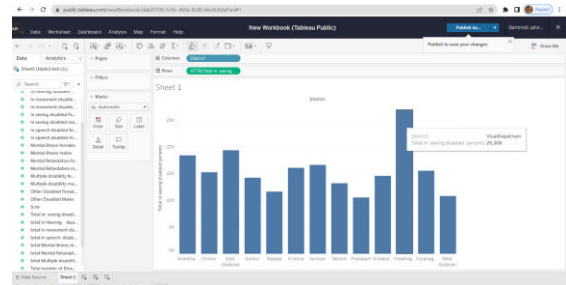


Figure 2.1

Figure 2.1 Shows Majority of blind people are in Visakhapatnam District.

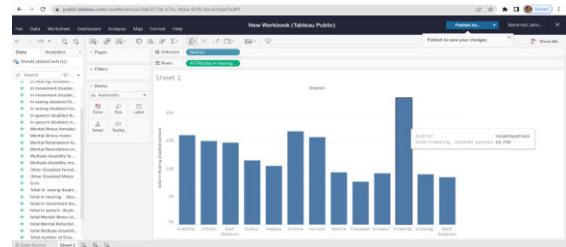


Figure 2.3

Figure 2.3 Shows Majority of deaf People are in Visakhapatnam.

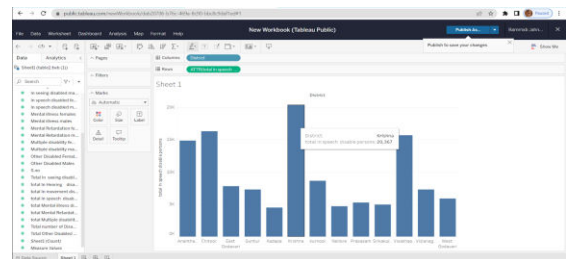


Figure 2.4

Figure 2.4 Shows Majority of people with dumb are in Krishna.

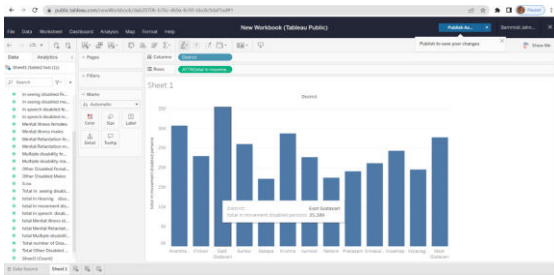


Figure 2.5

Figure 2.5 Shows In movement disabled people are majorly in East Godavari.

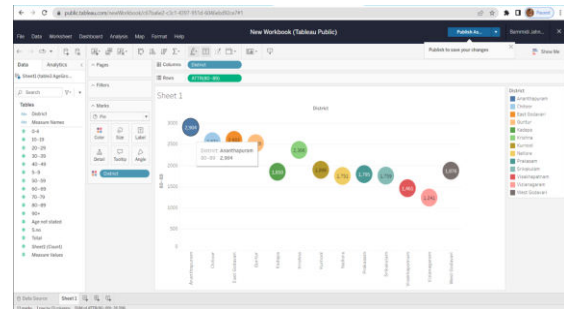


Figure 3.3

Figure 3.3 Shows Between 80-89 aged people maximum of disabled are in Ananthapuram and minimum are in Vizianagaram.

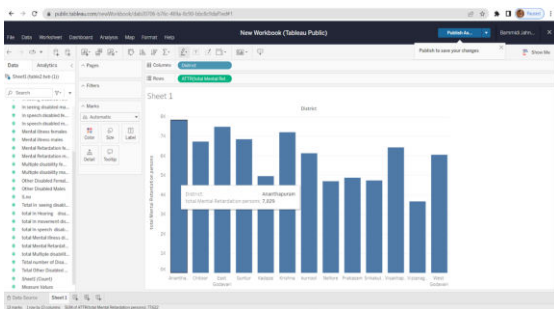


Figure 2.6

Figure 2.6 Shows that Ananthapuram has highest Mental Retardation persons.

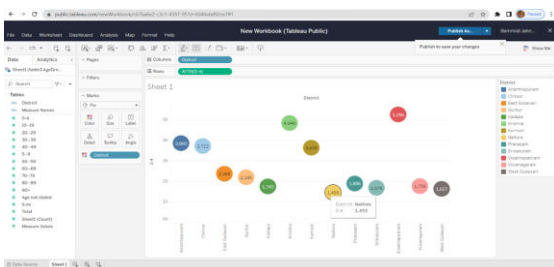


Figure 3.1

Figure 3.1 Shows that between 0 to 4 aged people Visakhapatnam has more disabled people and Nellore has less.

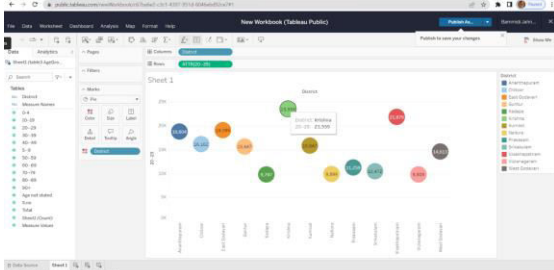


Figure 3.2

Figure 3.2 Shows that Between 20 to 29 aged people Krishna has more and Kadapa has less disabled people.

Conclusion

Therefore, we have visualized the data about disabled population in Andhra Pradesh based on age, gender, and types of disability. This helps disabled people to acquire the services provided by Government and Charitable trusts.

References:

- [1].<https://censusindia.gov.in/census.website/data/census-tables>
- [2].<https://www.tutorialspoint.com/excel/>
- [3].<https://www.tableau.com/why-tableau/what-is-tableau>
- [4].<https://www.timeanddate.com/geography/longitude-latitude.html>
- [5].<https://www.latlong.net/>
- [6].<https://www.curioushalt.com/best-orphanages-india-helpless/>