



# International Journal for Innovative Engineering and Management Research

A Peer Reviewed Open Access International Journal

www.ijiemr.org

**COPY RIGHT**



**ELSEVIER**  
**SSRN**

**2018 IJIEMR.** Personal use of this material is permitted. Permission from IJIEMR must be obtained for all other uses, in any current or future media, including reprinting/republishing this material for advertising or promotional purposes, creating new collective works, for resale or redistribution to servers or lists, or reuse of any copyrighted component of this work in other works. No Reprint should be done to this paper, all copy right is authenticated to Paper Authors

IJIEMR Transactions, online available on 27<sup>h</sup> Nov 2018. Link

[:http://www.ijiemr.org/downloads.php?vol=Volume-07&issue=ISSUE-12](http://www.ijiemr.org/downloads.php?vol=Volume-07&issue=ISSUE-12)

Title: **OPTIMIZATION OF INTELIGENT TRANSPORT SYSTEM IN URBAN AREA OF HYDERABAD FOR ACCIDENTAL PREVENTION ZONE IN CHOUTAPPAL**

Volume 07, Issue 12, Pages: 439–445.

Paper Authors

**SINGASANI RAJESH, B KALPANA**

ARJUN COLLEGE OF TECHNOLOGY & SCIENCE, MOUNT OPERA PREMISES, BATASINGARAM,  
HAYATHNAGAR, HYD, TELANGANA



USE THIS BARCODE TO ACCESS YOUR ONLINE PAPER

To Secure Your Paper As Per **UGC Guidelines** We Are Providing A Electronic Bar Code

## OPTIMIZATION OF INTELIGENT TRANSPORT SYSTEM IN URBAN AREA OF HYDERABAD FOR ACCIDENTAL PREVENTION ZONE IN CHOUTAPPAL

<sup>1</sup>SINGASANI RAJESH, <sup>2</sup>B KALPANA

<sup>1</sup>M.TECH, TRANSPORTION DEPARTMENT, ARJUN COLLEGE OF TECHNOLOGY & SCIENCE, MOUNT OPERA PREMISES, BATASINGARAM, HAYATHNAGAR, HYD, TELANGANA

<sup>2</sup>ASSISTANT PROFESSOR, ARJUN COLLEGE OF TECHNOLOGY & SCIENCE, MOUNT OPERA PREMISES, BATASINGARAM, HAYATHNAGAR, HYD, TELANGANA

### Abstract:

An accident is an unexpected damage, coincidental and spontaneous occasion that are caused by the exchange of vitality between the human body and the earth. It includes at least one street vehicle, happening on a street vehicle amid which somewhere around at least one individual is disjoined or murdered. They force an immense financial expense as far as troublesome passings, wounds, and loss of potential salary and consequently street wellbeing has turned into an issue of national concern. Shrewd Transport Framework applications in various territories of transportation are checked on. These incorporate movement administration, portability, security, open transport administration, vitality utilization and contamination. The viability of ITS is constrained at present as a result of moderate market infiltration, unproved and complex frameworks, and quickly evolving innovations. They force a tremendous financial expense regarding less than ideal passings, wounds, and loss of potential wage and henceforth street wellbeing has turned into an issue of national concern. Two primary components in charge of street mishaps are overwhelming activity on streets and rash driving. Diminishing introduction to hazard through transport and land utilize arrangements is the fundamental factor behind the accidents. Molding the street arrange for street damage aversion is one of the primary advance to be embraced. The primary target of this investigation is to depict the essential standards of Choutappal street in Hyderabad movement damage control that separate the present circumstance of car crashes, and characterize the particular mediations that can be executed in various settings to keep the street activity wounds and diminishes the quantity of dark spots and to recommend different measures to fortify the calamity hazard administration to deal with the danger of the debacle so new endeavors can be actualized to associate the auto collisions.

### 1.0 Introduction

Road twist of destiny among others happens regularly those outcomes in harm, demise and property harm. The most critical hazard components for crash alongside auto design pace of task, road format, road condition. A mishap is an unintended mischief, accidental and spontaneous occasion which can be a

direct result of the switch of quality between the human body and the earth. It incorporates at least one road vehicle, occurring on a street auto amid which no less than at least one individual is disjoined or executed. They force a gigantic socio – monetary expense in expressions of less than ideal passings,

mishaps, and absence of potential benefits and hence street security has end up being an inconvenience of national trouble.

### Type of pavements:-

The asphalts can be classified principally based at the basic execution into , adaptable asphalts and resolute asphalts. In adaptable asphalts, wheel hundreds is exchanged by utilizing grain-to-grain contact of the total through the granular structure. The bendy asphalt, having significantly less flexural quality, acts like a bendy sheet Actually, in rigid asphalts, wheel hundreds is exchanged to sub-level soil through flexural intensity of the asphalt and the asphalt demonstrations like a firm plate Notwithstanding those, composite asphalts likewise are to be had. A thin layer of bendy asphalt over unbending asphalt is incredible asphalt with most extreme immaculate qualities. Notwithstanding, such asphalts are scarcely at any point utilized in new development as a result of high esteem and confounded assessment required.

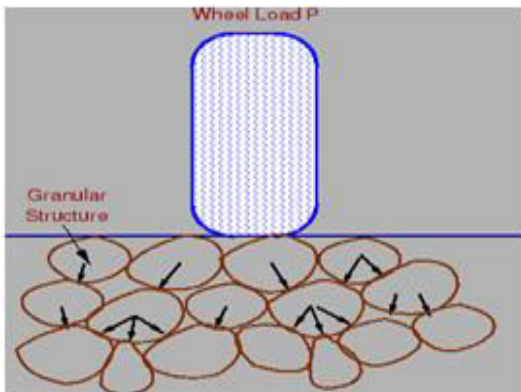


Figure: Load move in granular structure

### Deflection on flexible pavement:

The wheel stack showing up on the asphalt may be disseminated to a substantially more extensive area, and the pressure diminishes with the profundity. Exploiting those strain circulation work, bendy asphalts commonly has numerous layers. Thus, the plan of bendy asphalt utilizes the idea of layered machine. Situated in this, adaptable asphalt can be developed in some of layers and the best layer

should be of uncommon tasteful to keep up most extreme compressive strain, further to wear and tear. The lower layers will encounter lesser significance of stress and low acceptable material might be utilized.

### Travel and traffic management:

Movement administration is the organization, course of action, guiding and control of every work area bound and moving guests, comprehensive of walkers, bicyclists and a wide range of engines. Its motivation is to accommodate the protected, precise and productive development of people and things, and to shield and, where conceivable, improve the best of the area condition on and neighboring guests focuses. This digital book is a creation to site guests control, written in laypersons' dialect, and accepting no foundation data of the issue. Different key guests qualities in regards to street clients, engines and streets, and site guests law and oversee, are said, together with a couple of movement amount and activity coast concerns important to guests administration.

### Operation of the Traffic Network:

In guest's administration, the key trouble is dealing with activity The visit and conveyance of people and merchandise The consistency and unwavering quality of adventure and transport in all circumstances is the point of energetic task of the site guests network. Limiting and keeping the impacts of episodes play a critical position. In vivacious task, outfit incorporate guests oversee, guests insights and episode control. Attention to the real time ubiquity of the conveyance contraction is an indispensable operational necessity. The Activity Administration Center is responsible for the avant-garde task of the site guests system and guests administration contributions.

### 2.0 Literature review

[1] Gopala Raju S.V (2007), the change of urban delivery machine has not spared pace

with the guests call for both in expressions of incredible and amount. Accordingly the utilization of tweaked transport extraordinarily wheelers and transitional open delivery is creating at an expedient pace.

[2] Balamohan (2000) An Area whether hyperlink or hub that reports standard Accident frequencies, charges is considered as a Mischance Dark Spot. The methodology that is utilized the investigate distinguish hazardous Areas is known as the Basic Accident Rate Factor Technique. Since guests crashes are arbitrary events and can be mulled over as Uncommon Occasions it isn't constantly achievable to end up mindful of dangerous spots unmistakably on the start of the scope of accidents.

[3]Gopala Raju SV., (2012) Michael Sorensen proposed damage seriousness strategy to select dark spots and as contrasted and a common method (recurrence rate ID). In this strategy, he positioned on the introduce of harm seriousness weighted bit of destiny instead of typical mishap rate. Weightage is gone up against the commence of occurrence sorts which incorporates mischance zone, a blend of vehicles stressed and mishap put Weight age for each sort of mischance are computed based on the socio budgetary charge of wounds.

[4] Kuo, Y. Furthermore, Wang, C (2011) Numerous cases joining the elements of Business Road and movement lane (taking Champs-Elysees Road for a run of the mill precedent) demonstrate that the capacities of productivity of vehicle guests, openness of travel and high priority for taking strolls might be contained in a solitary road simultaneously.

### 3.0 Methodology

Street security ventures have propelled a nationwide wellbeing approach that was authorizing by methods for the legislature of India. The service has approached all states for putting in of state road assurance board and region road wellbeing advisory groups, and to

hold their gathering by and large. A poor externality related with development in street network, mechanization and urbanization inside the usa is the development in road mishaps and road crash fatalities. Today, road guests mishaps are one of the main sources of death toll, incapacities and hospitalization inside the unified states authorizing enormous socio-financial charges.

### Essential Standards for Mishap Examination:

- The thought process of an examination is to find the reason of an episode and forestall fate events, never again to repair fault. An autonomous methodology is important to achieve target discoveries.
- Visit the episode scene when suitable – even as information are perfect and before witnesses disregard critical data.
- If achievable, meet the harmed worker at the scene of the episode and "walk" him or her through a re-sanctioning. Be cautious never again to earnestly rehash the demonstration that encouraged the mischief.

### Inadvertent Counteractive Action Zone In Choutappal

these consequences envelop absentmindedness in the meantime as riding, awful housework rehearses, an again harm to a parks laborer because of lifting, a cop preparing hurt, a mischief even as getting off substantial framework, slipping on a wet pool floor, and a work district happenstance. Every scene is returned to by utilizing the harmed individual to reflect what may have been executed diversely to keep the bit of destiny or damage and stay away from without a doubt presence evolving outcomes. Stay away from the desire to transport fastly as a result of vigilante.

### Improving Visibility of Road Users:

Seeing and been seen are essential components for the assurance for all road clients. The different ways to deal with enhance the

perceivability are the utilization of day time walking lighting apparatuses on the front of the mechanized autos, which enhances the perceivability while traveling sooner or later of sunlight hours. Likewise the utilization of intelligent and cautious clothing which will build the perceivability of riders over the span of the evening and thus diminishes the possibility of accident

### Street Development and Street Development Quality:

Advance development is required to settle the arrangement of the new road change and ensure the Privilege of Route free of infringements prior. Modernization in format notwithstanding creation forms is required to accomplish an ecofriendly and quick generation of the Street mission. The utilization of current imported hardware for creation of the asphalt builds the presence length and also decent of the development. Approaches are to be followed in this sort of approach to give strict quality oversee on each creation as indicated by the outline standards and specialized details and the contracting organization is completely in charge of the development top notch over The supplier length

### 4.0 Results

For the making arrangements of road change and administration plans Activity Information Accumulation and projections there of guests volumes are principal prerequisites. Movement glide design gives off an impression of being irregular in dissemination, since it mirrors people's inspiration in expressions of different organization of vehicles on assorted sorts of streets underneath changing ecological circumstances. It takes after then that insights

being gathered are a methodological measurement, since site guests float design takes after an irregular conveyance. In spite of such complexities, it observes pretty and absolutely characterized designs that are conceivable to arrange and break down.

- A portion of the vital thing regions in which site guests drift certainties is required for development and control of the road organize include:

- Determination of a product me of road augmenting wishes and in vogue change or fortifying of existing road through a product me of reproduction and creation of another streets;

- To investigate the proficiency of the street network by assessing contemporary guests volume with the degree of administration or the computed capacity

### Traffic Volume Count:

The movement amount check number gives the proportion of what number of vehicles skips through a chose territory over the span of a time span. As indicated by the movement degree, the time might be sorted to stature hour and off tallness hour. For any guest's foundation, plan and fortuitous event investigate top hour guests volume are basic.

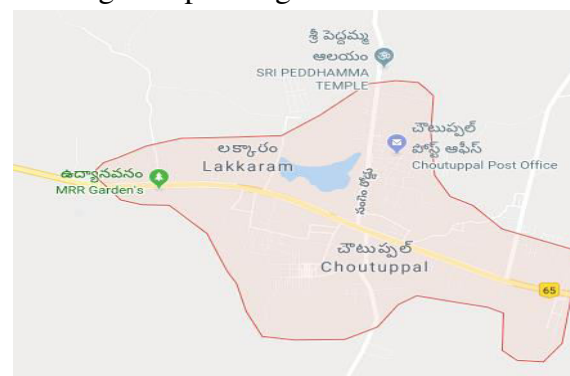
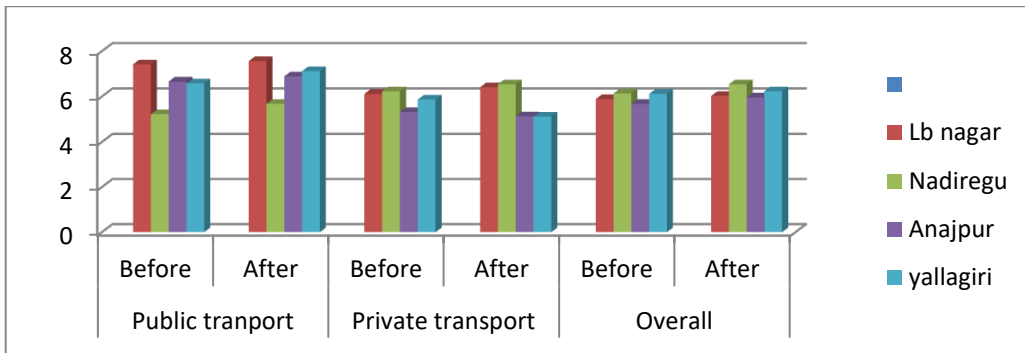


Figure: over view of choutappal zone

**Table: Accidental approach percentages during years past to present for different transport**

Area taken	Public tranport	Private transport	Overall

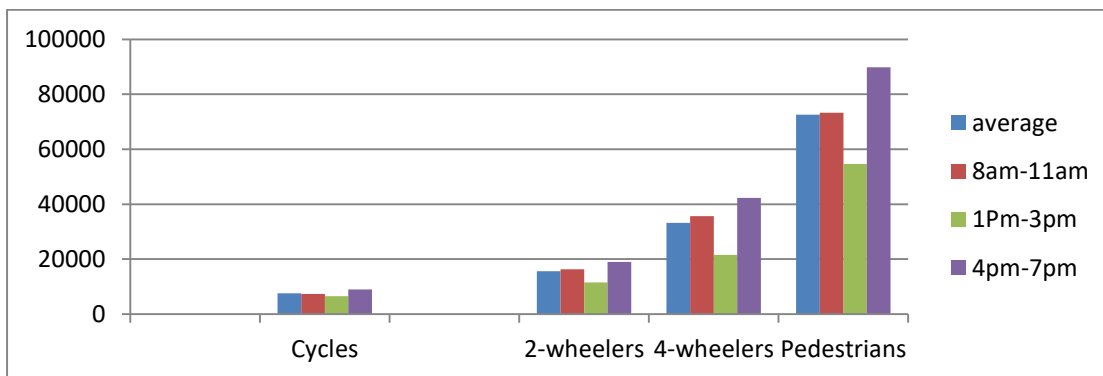
	Before	After	Before	After	Before	After
Lb nagar	7.42	7.56	6.12	6.41	5.89	6.03
Nadiregu	5.22	5.68	6.23	6.54	6.14	6.54
Anajpur	6.66	6.89	5.32	5.13	5.68	5.96
yallagiri	6.58	7.12	5.87	5.12	6.12	6.23



**Graph: Accidental approach percentages during years past to present for different transport**

**Table: Analytical Assesment of accidental percentages for different vehicles in Lb nagar region**

parameters	average vehicles	8am-11am	1Pm-3pm	4pm-7pm
Cycles	7600	7386	6500	8956
2-wheelers	15618	16356	11524	18975
4-wheelers	33211	35689	21589	42356
Pedestrians	72567	73256	54689	89756

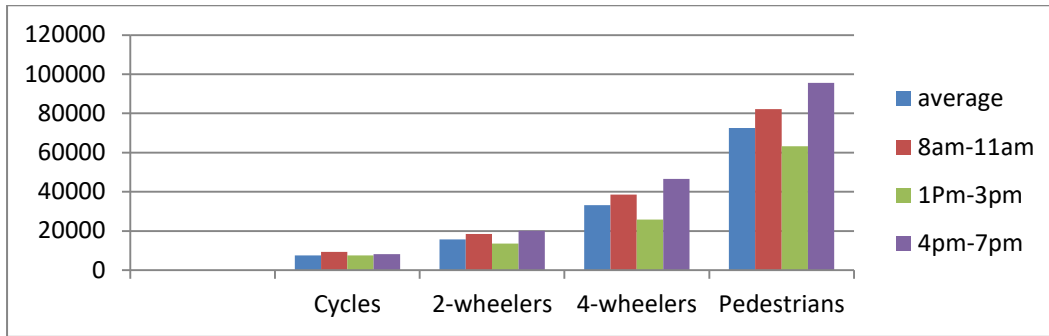


**Graph: Analytical Assessment of accidental prozone in lb nagar region**

**Table: Analytical Assessment of accidental percentages for different in Nadiregu region**

parameters	average vehicles	8am-11 am	1Pm-3pm	4pm-7pm

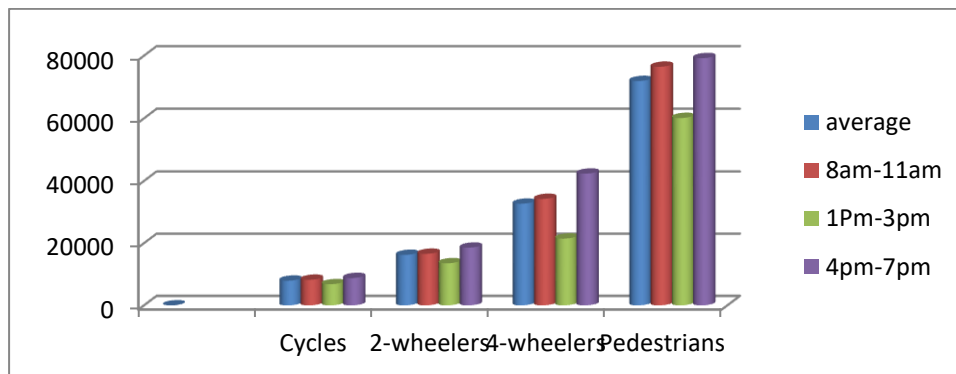
Cycles	8416	9300	7500	8250
2-wheelers	17388	18456	13562	20147
4-wheelers	36994	38569	25892	46521
Pedestrians	80349	82147	63254	95647



**Graph: Analytical Assesment of accidental percentages for different in Nadiregu region**

**Table: Analytical Assesment of accidental percentages for different in Anajpur region**

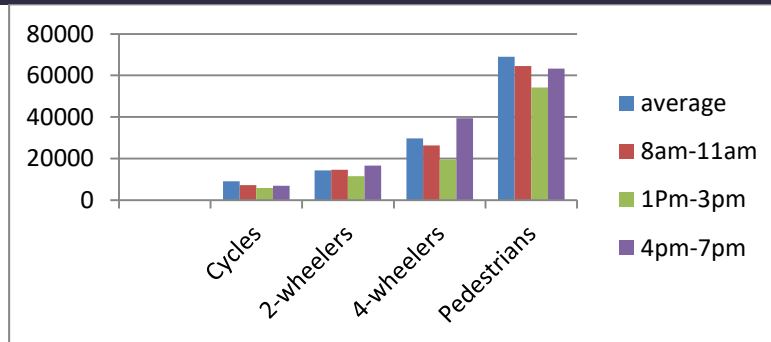
Parameters	average vehicles	8am-11am	1Pm-3pm	4pm-7pm
Cycles	7946	8231	6812	8795
2-wheelers	16229	16586	13541	18562
4-wheelers	32689	34235	21478	42356
Pedestrians	71934	76475	60114	79214



**Graph: Analytical Assesment of accidental percentages for different in Anajpur region**

**Table: Analytical Assesment of accidental percentages for different in Yallagiri region**

Parameters	average vehicles	8am-11am	1Pm-3pm	4pm-7pm
Cycles	8946	7231	5812	6795
2-wheelers	14229	14586	11541	16562
4-wheelers	29689	26235	19478	39356
Pedestrians	68934	64475	54114	63214



**Graph 4.10 Analytical Assessment of accidental percentages for different in Yallagiri region**

**Conclusion:**

The optional insights changed into comparatively examined by utilizing Mischance Thickness Strategy and Weighted Seriousness List and ended up connected with the outcomes gained from above procedures to recommend healing measures for the analyzed dark spots by means of returning to them and discovering the achievable reasons of mishaps. We have furthermore seen that the asphalt width wind up decreased where there the recurrence of wounds transformed into additional, the ensuing decide end up gone up against the occurrence helpless area near choutappal which proposes that the middle width is hoisted to about to the width of single path street i.E., three.75m. Following a vehicle painstakingly to update i.E., closely following There was a couple of district had been no sign discussions are found comprising of personnel division at station choutappal which has made that area as a fortuitous event inclined place From this mission we've found that there are various spots wherein the width of asphalt is diminished all of sudden which has laid a way for accidents

**Scope of work:**

The analyzed fortuitous event dark spots might be completely examined regarding recognition of slant, level of flat bend, huge height and adjusted if vital. In the wake of correcting the analyzed mischance dark spots

of the view zone if the recurrence of wounds decreases then the technique for positioning and seriousness list can be utilized to select mishap dark spots on a wide range of streets comprehensive of Turnpikes, National expressways, State thruways, and provincial roadways

**References:**

[1] Gopala Raju S.V (2007),, ‘Access and Mobility for the Urban Poor in India: Bridging the Gap between Policy and Needs’, paper presented at the Forum on Urban Infrastructure and Public Service Delivery, New Delhi, June.

[2] Balamohan (2000), Enterprise GIS Approach for Urban Transportation Planning, , Travel Desire between municipalities and Doha, ESRI Map book Vol 14, Pp 109

[3] Dodson, J., Buchanan, N., Gleeson, B. and Sipe, N. (2006) 'Investigating the social dimensions of transport disadvantage I: Towards new concepts and methods', Urban Policy and Research, 24(4): 433– 453

[4] [4] Kuo, Y. Furthermore, Wang, C (2011) Behind the Subjective Value of Travel Time Savings: the perception of Work, Leisure, and Travel from a Joint Mode Choice Activity Model’, Journal of Transport Economics and Policy, 37 (part I),pp. 29-46

[5] Athira Mohan, Dr. V.S. Landge (2017) Identification of Accident Black Spots on National Highway. International Journal of Civil Engineering and Technology, 8(4), , pp. 588-596





# International Journal for Innovative Engineering and Management Research

PEER REVIEWED OPEN ACCESS INTERNATIONAL JOURNAL

[www.ijiemr.org](http://www.ijiemr.org)